

Data Sheet

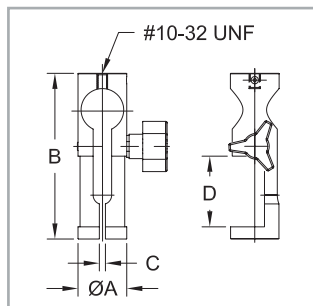
Grips & Attachments

► All dimensions presented as IN [MM]

Wire terminal grips

For testing wire terminals, cables, connectors, and other samples for pull testing.

| Model No. | Capacity lbF [N] | Weight lb [kg] | ØA | B | C | D |
|-----------|------------------|----------------|-------------|-------------|--------------------------|-------------|
| G1001 | 200 [1000] | 0.29 [0.13] | 1.00 [25.4] | 3.40 [86.4] | 0 - 0.125 [0 - 3.1] | 1.45 [36.8] |
| G1001-1 | | | | | 0.125 - 0.25 [3.1 - 6.3] | |
| G1001-2 | | | | | 0.25 - 0.375 [6.3 - 9.5] | |

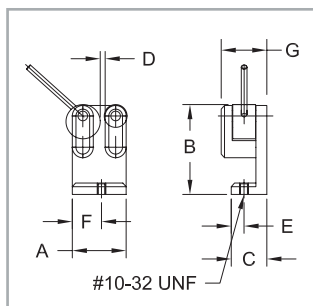


Dual roller grip

For securing the ends of wire, cable, and tubing samples for pull testing. Engaging and disengaging samples is quick and easy with an efficient cam design and convenient side slot for sample insertion. Steel rollers are serrated for good grip.

| Model No. | Capacity lbF [N] | Weight lb [kg] |
|-----------|------------------|----------------|
| G1002 | 200 [1000] | 0.19 [0.09] |

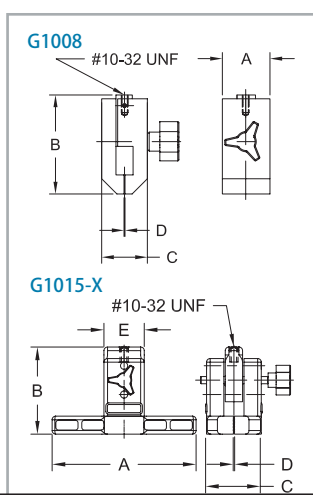
| A | B | C | D | E | F | G |
|-------------|-------------|-------------|--------------------|------------|-------------|------------|
| 1.18 [30.0] | 2.00 [50.8] | 0.75 [19.1] | 0 - 0.25 [0 - 6.3] | 0.25 [6.4] | 0.64 [16.3] | 1.0 [25.4] |



Film and paper grips

For gripping film, paper, labels, packaging, and other thin materials for tensile and peel testing. Adjustable serrated interlocking jaws grip the sample securely.

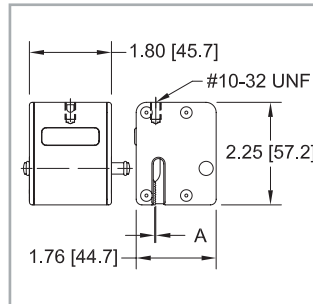
| Model No. | Capacity lbF [N] | Weight lb [kg] | A | B | C | D |
|-----------|------------------|----------------|--------------|-------------|-------------|---------------------|
| G1008 | 100 [500] | 0.31 [0.14] | 1.00 [25.4] | 2.50 [63.5] | 1.60 [40.6] | 0 - 0.15 [0 - 3.8] |
| G1015-1 | | 0.57 [0.26] | 3.00 [76.2] | 3.00 [76.2] | 1.90 [48.3] | 0 - 0.50 [0 - 12.7] |
| G1015-2 | | 0.67 [0.30] | 5.00 [127.0] | | | |
| G1015-3 | | 0.77 [0.35] | 7.00 [177.8] | | | |



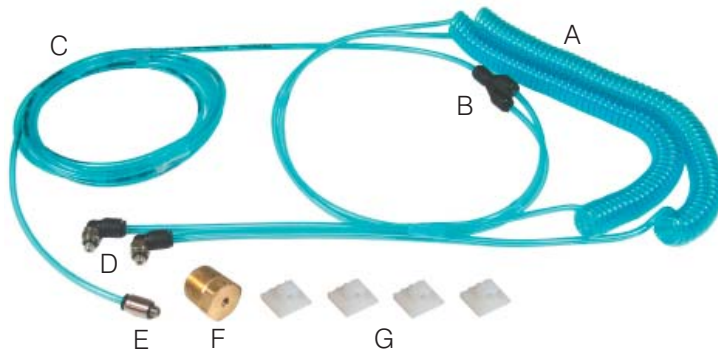
Pneumatic film and paper grip

Fully enclosed, air-powered grip for seal strength testing of packaging, elongation testing of various materials, and other tensile testing requirements. Serrated interlocking jaws effectively grip samples for up to 100 lbF of force. The grip features a unique integrated open/close valve for quick sample engagement and disengagement. An air connection kit, consisting of tubing and fittings needed to connect two grips, is available separately.

| Model No. | Capacity lbF [N] | Weight lb [kg] | Max. pressure PSI [MPa] | Air input thread | A |
|-----------|---------------------------------|----------------|-------------------------|------------------|--------------------|
| G1046 | 100 [500] at 100 PSI [0.86 MPa] | 0.58 [0.26] | 125 [0.86] | #10-32 UNF | 0 - 0.13 [0 - 3.3] |



The optional air connection kit consists of the following:



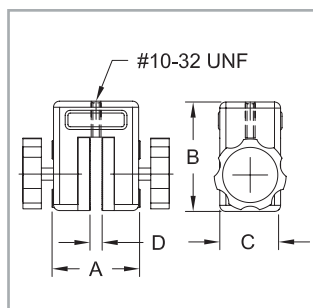
- A. Coiled tubing, 1/8" OD, 1/16" ID, 8" retracted length (qty. 2)
- B. Y-splitter (qty. 1)
- C. Straight tubing, 1/8" OD, 1/16" ID, 5' length (qty. 1)
- D. Elbow fitting, tubing to #10-32M (qty. 1)
- E. Straight fitting, tubing to #10-32M (qty. 1)
- F. Thread adapter, #10-32F to 1/4" NPT M (qty. 1)
- G. Adhesive-backed guide (qty. 4)

| Model No. | Description |
|-----------|------------------------------|
| AC1019 | Air connection kit for G1046 |

Parallel jaw grip

For general pull testing applications. Manually tightened serrated jaws may be individually adjusted.

| Model No. | Capacity lbF [N] | Weight lb [kg] | A | B | C | D |
|-----------|------------------|----------------|-------------|-------------|-------------|--------------------|
| G1013 | 200 [1000] | 0.65 [0.29] | 1.75 [44.5] | 2.25 [57.2] | 1.25 [31.8] | 0 - 0.25 [0 - 6.3] |

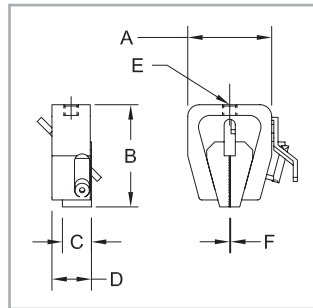


Wedge grips

For a variety of tensile testing requirements. These heavy duty self-tightening grips can accept various sample thicknesses. Serrated jaws are easily opened by a spring loaded lever.

| Model No. | Capacity lbF [kN] | Weight lb [kg] |
|-----------|----------------------|-------------------|
| G1012 | 200 [1] | 0.30 [0.14] |
| G1012-1 | 2000 [10] | 0.90 [0.41] |

| Model No. | A | B | C | D | E | F |
|-----------|----------------|----------------|---------------|----------------|----------------|-----------------------|
| G1012 | 1.65 [41.9] | 2.02 [51.3] | 0.6 [15.2] | 0.83 [21.1] | #10-32 UNF | 0 - 0.17 [0 - 4.3] |
| G1012-1 | 2.75 [69.9] | 3.27 [83.1] | 1.0 [25.4] | 1.38 [35.1] | 5/16-18 UNC | 0 - 0.39 [0 - 9.9] |



Padded attachments

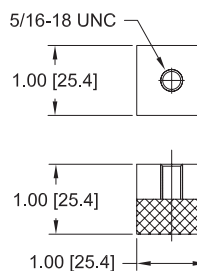
For applications in physical therapy and ergonomics, including muscle strength testing, job task requirements, and more.

| Model No. | Capacity lbF [kN] | Weight lb [kg] |
|-----------|----------------------|-------------------|
| G1019 | 500 [2.5] | 0.03 [0.01] |
| G1020 | 500 [2.5] | 0.13 [0.06] |
| G1021 | 500 [2.5] | 0.25 [0.11] |

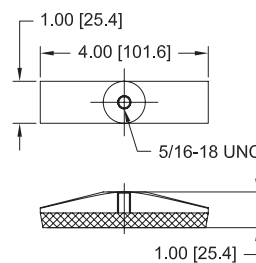


◀ Supplied with a 5/16-18M to #10-32F adapter

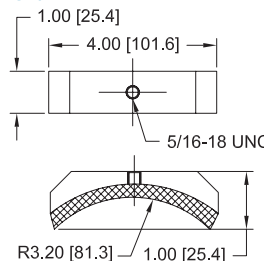
G1019



G1020



G1021



G1019



G1020



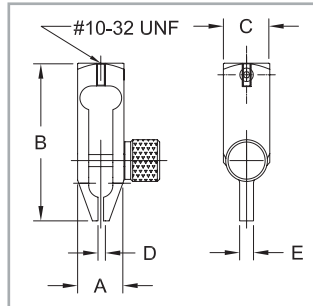
G1021



Miniature component grip

For testing small and hard-to-reach electronic and mechanical components. Slender profile allows this grip to be used in a wide range of applications.

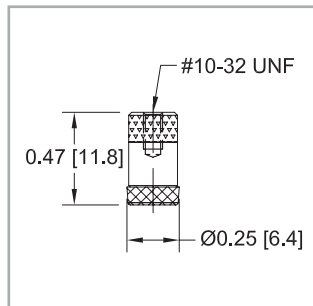
| Model No. | Capacity lbF [N] | Weight lb [kg] | A | B | C | D |
|-----------|------------------|----------------|------------|------------|------------|--------------------|
| G1003 | 30 [150] | 0.05 [0.02] | 0.5 [12.7] | 1.7 [43.2] | 0.5 [12.7] | 0 - 0.07 [0 - 1.8] |



Rubber tip

Simulates a finger for testing pushbuttons, membrane switches, touch-screen panels, keyboards, etc.

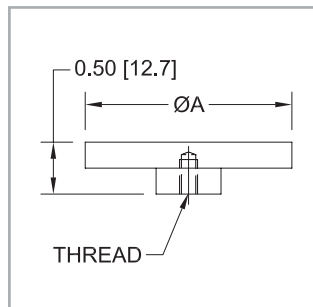
| Model No. | Capacity lbF [N] | Weight lb [kg] |
|-----------|------------------|----------------|
| G1011 | 50 [250] | 0.01 [0.004] |



Compression plates

For compressing springs, foams, cartons, aerosol cans, and many other products.

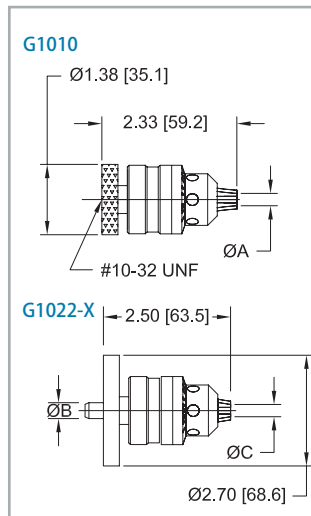
| Model No. | Capacity lbF [N] | Weight lb [kg] | ØA | Thread |
|-----------|------------------|----------------|------------|----------|
| G1009 | 200 [1000] | 0.08 [0.04] | 2.0 [51.0] | #10-32F |
| G1009-1 | 500 [2500] | 0.27 [0.12] | 3.0 [76.2] | 5/16-18F |



Chuck grips

For securing round samples, fixtures, or bits. Although both models may be used in force and torque applications, the G1010 is typically used in force measurement applications, while the G1022 is typically mounted to Series TST torque test stands for torque measurement applications.

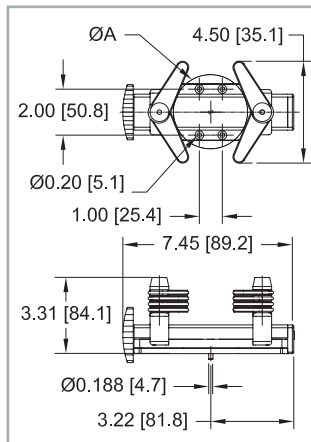
| Model No. | Capacity | Weight lb [kg] | ØA | ØB | ØC |
|-----------|---------------------|----------------|---------------------------|-------------|---------------------------|
| G1010 | 30 lbF [150 N] | 0.35 [0.16] | 0.062 - 0.375 [1.6 - 9.5] | N/A | N/A |
| G1022-1 | 100 lbFin [11.3 Nm] | 0.50 [0.23] | N/A | 0.188 [4.7] | 0.028 - 0.250 [0.7 - 6.3] |
| G1022-2 | | | | | 0.062 - 0.375 [1.6 - 9.5] |
| G1022-3 | | | | | 0.078 - 0.500 [2 - 12.7] |



Universal bottle grip

For gripping bottles and containers for closure torque testing. Eight rubber edged gripping arms secure a wide range of sample shapes and sizes and can be individually positioned at angles of up to 180°. Mounts directly to Series TST torque test stands or force test stands (for such applications as top load testing).

| Model No. | Capacity lbFin [Nm] | Weight lb [kg] | ØA |
|-----------|---------------------|----------------|------------------|
| G1023 | 100 [11.3] | 1.50 [0.7] | 4.80 [122.0] MAX |

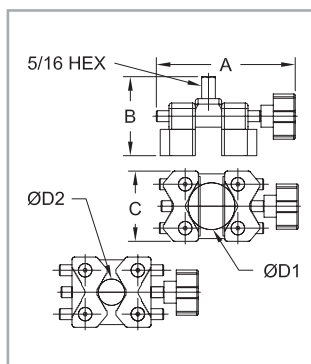


Universal cap grip

For gripping bottle and container caps in closure torque testing. Serrated, reversible aluminum jaws effectively grip a wide range of sample shapes and sizes. Mounts directly to Series STH and STJ torque sensors, and Mark-10 force test stands.

| Model No. | Capacity lbFin [Nm] | Weight lb [kg] |
|-----------|---------------------|----------------|
| G1053 | 100 [11.3] | 0.39 [0.18] |

| A | B | C | ØD1* | ØD2* |
|------------|------------|------------|---------------------------|---------------------------|
| 3.1 [78.7] | 2.0 [50.8] | 1.6 [40.6] | 1.16 - 1.80 [29.5 - 45.7] | 0.65 - 1.29 [16.5 - 32.8] |

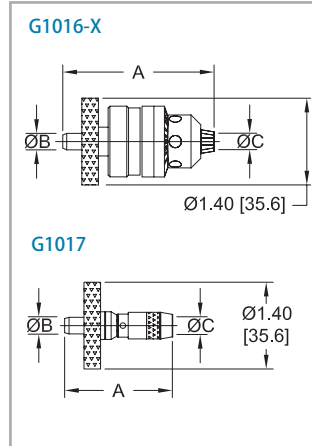


* Jaws must be reversed to switch from ØD1 to ØD2

Series STH attachments

Jacobs chucks and bit holder mount to the STH to secure a fixture, bit, or sample during torque testing.

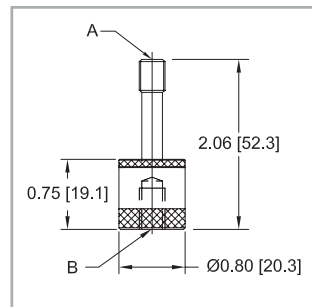
| Model No. | Capacity lbFin [Nm] | Weight lb [kg] | A | ØB | ØC |
|-----------|---------------------|----------------|-------------|-------------|---------------------------|
| G1016-1 | 100 [11.3] | 0.26 [0.12] | 2.90 [73.7] | 0.188 [4.7] | 0.028 - 0.250 [0.7 - 6.3] |
| G1016-2 | | 0.36 [0.16] | 3.16 [80.3] | | 0.062 - 0.375 [1.6 - 9.5] |
| G1016-3 | | 0.67 [0.30] | 3.73 [94.7] | | 0.078 - 0.500 [2 - 12.7] |
| G1017 | | 0.11 [0.05] | 2.33 [59.2] | | 1/4" hex |



Swivel adapters

For use between any grip and force gauge to provide a swiveling action for proper sample alignment.

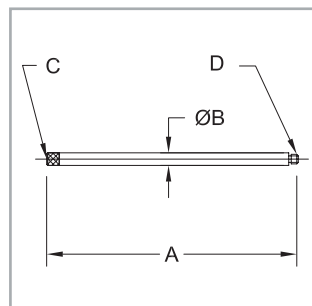
| Model No. | Capacity lbF [N] | Weight lb [kg] | A | B |
|-----------|------------------|----------------|----------|----------|
| G1018-1 | 200 [1000] | 0.12 [0.05] | #10-32M | #10-32F |
| G1018-2 | 500 [2500] | 0.27 [0.12] | 5/16-18M | 5/16-18F |



Extension rods

For use between a force gauge and another attachment, such as a hook or compression plate.

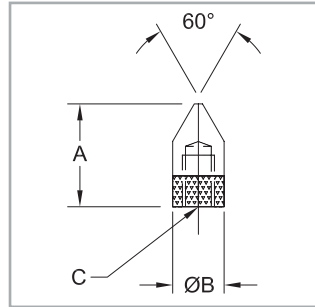
| Model No. | Capacity lbF [N] | Weight lb [kg] | A | ØB | C | D |
|-----------|------------------|----------------|-------------|-------------|----------|----------|
| G1024 | 200 [1000] | 0.01 [0.005] | 5.0 [127.0] | 0.25 [6.4] | #10-32F | #10-32M |
| G1024-1 | | 0.02 [0.009] | 2.0 [50.8] | | | |
| G1024-2 | | 0.05 [0.023] | 1.0 [25.4] | | | |
| G1031 | 500 [2500] | 0.05 [0.023] | 5.0 [127.0] | 0.50 [12.7] | 5/16-18F | 5/16-18M |
| G1031-1 | | 0.10 [0.045] | 2.0 [50.8] | | | |
| G1031-2 | | 0.25 [0.113] | 1.0 [25.4] | | | |



Chisel points

For compressing or puncturing a variety of samples.

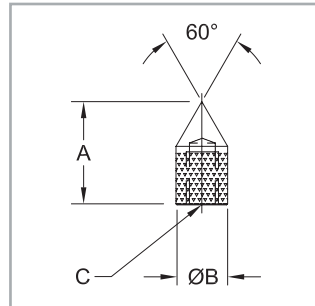
| Model No. | Capacity lbF [N] | Weight lb [kg] | A | ØB | C |
|-----------|------------------|----------------|-------------|-------------|----------|
| G1025 | 200 [1000] | 0.003 [0.001] | 0.50 [12.7] | 0.25 [6.4] | #10-32F |
| G1032 | 500 [2500] | 0.040 [0.018] | 1.00 [25.4] | 0.50 [12.7] | 5/16-18F |



Cone points

For various compression tests.

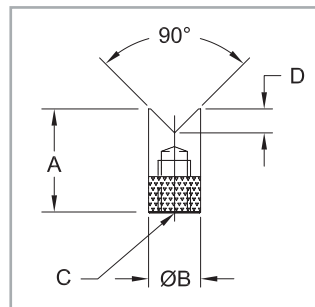
| Model No. | Capacity lbF [N] | Weight lb [kg] | A | ØB | C |
|-----------|------------------|----------------|-------------|-------------|----------|
| G1026 | 200 [1000] | 0.003 [0.001] | 0.50 [12.7] | 0.25 [6.4] | #10-32F |
| G1033 | 500 [2500] | 0.030 [0.014] | 1.00 [25.4] | 0.50 [12.7] | 5/16-18F |



V-grooves

For compression testing of round or odd-shaped samples.

| Model No. | Capacity lbF [N] | Weight lb [kg] | A | ØB | C | D |
|-----------|------------------|----------------|-------------|-------------|----------|------------|
| G1027 | 200 [1000] | 0.004 [0.002] | 0.50 [12.7] | 0.25 [6.4] | #10-32F | 0.08 [2.0] |
| G1034 | 500 [2500] | 0.040 [0.018] | 1.00 [25.4] | 0.50 [12.7] | 5/16-18F | 0.25 [6.4] |



Data Sheet

Grips & Attachments

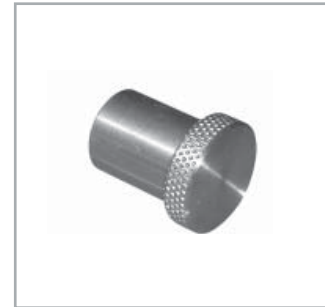
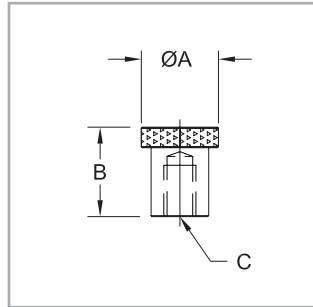
32-1060 REV 0

Page 8 of 8

Flat heads

For compression testing of buttons, membrane switches, etc.

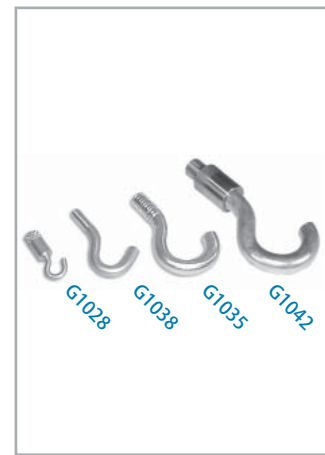
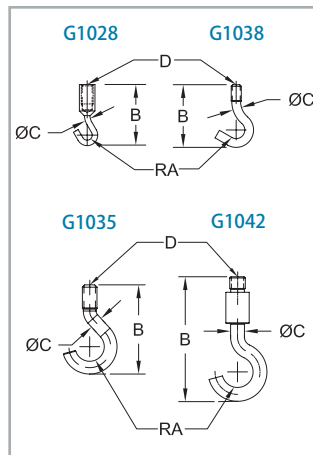
| Model No. | Capacity lbF [N] | Weight lb [kg] | ØA | B | C |
|-----------|------------------|----------------|-------------|-------------|----------|
| G1029 | 200 [1000] | 0.01 [0.005] | 0.5 [12.7] | 0.5 [12.7] | #10-32F |
| G1036 | 500 [2500] | 0.06 [0.027] | 0.75 [19.1] | 0.87 [22.1] | 5/16-18F |



Hooks

For tensile testing of various samples.

| Model No. | Capacity lbF [N] | Weight | RA | B | ØC | D |
|-----------|------------------|---------------|------------|--------------|-------------|----------|
| G1028 | 20 [100] | 0.010 [0.005] | 0.05 [1.3] | 1.00 [25.4] | 0.10 [2.5] | #10-32F |
| G1038 | 200 [1000] | 0.020 [0.009] | 0.20 [5.1] | 1.50 [38.1] | 0.19 [4.8] | #10-32M |
| G1035 | 500 [2500] | 0.050 [0.023] | 0.30 [7.6] | 1.90 [48.3] | 0.28 [7.1] | 5/16-18M |
| G1042 | 1000 [4500] | 0.320 [0.145] | 0.5 [12.7] | 4.10 [104.1] | 0.45 [11.4] | 1/2-20M |



Thread adapters & couplings

For use between force gauge shafts, grips, and/or attachments.

| Model No. | Capacity lbF [N] | A | B | C |
|-----------|----------------------------|-------------|----------|----------|
| G1050 | 100 [500] | 0.75 [19.1] | #4-40M | #10-32F |
| G1051 | | 0.60 [15.2] | #4-40M | #10-32M |
| G1039 | | 0.75 [19.1] | #10-32F | #10-32F |
| G1030 | 200 [1000] | 0.50 [12.7] | 5/16-18M | #10-32F |
| G1047 | | 0.75 [19.1] | #10-32M | M4F |
| G1048 | | 0.75 [19.1] | M4M | #10-32F |
| G1054 | | 0.75 [19.1] | M6M | #10-32F |
| G1040 | 500 [2500] | 1.00 [25.4] | 5/16-18M | 5/16-18M |
| G1037 | | 1.00 [25.4] | 5/16-18F | 5/16-18F |
| G1049 | | 1.25 [31.8] | M6M | 5/16-18F |
| G1041 | 1000 [5000] or 500 [2500]* | 1.00 [25.4] | 1/2-20M | 5/16-18M |

*1000 [5000] when used in compression, 500 [2500] when used in tension

