

Tape & Band TENSION SENSOR

Model TERX

5 Tension Ranges
0 – 100 g up to 0 – 2000 g

Dual-flanged, cylindrical rollers are ball bearing mounted to provide a friction-free path for tapes, bands and narrow webs/warps up to 30 mm wide. TERX Tension Sensors are offered with roller widths of 7, 10, 15, 20 and 30 mm.



FEATURES

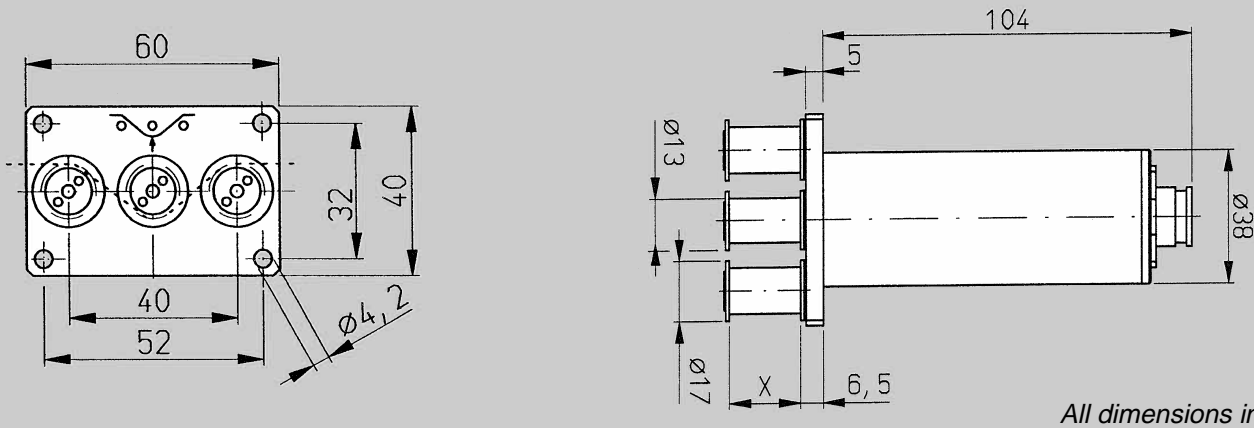
- Roller shells are available in aluminum, chrome-plated steel and plastic
- Precision strain gauge sensing for highest accuracy and repeatability
- 0 –1 V DC output, proportional to tension (0 –10 V DC optional)
- Frequency response of 100 Hz
- Surface mount electronics provide long-term reliability
- Optional 5 ft. cable, TE-CABLE-CC is recommended. Longer lengths are available.
- Specify roller width “YY”

TENSION RANGES

Model #	TERX-100-YY	TERX-200-YY	TERX-500-YY	TERX-1K-YY	TERX-2K-YY
Range	0 –100 g	0 –200 g	0 –500 g	0 –1000 g	0 –2000 g

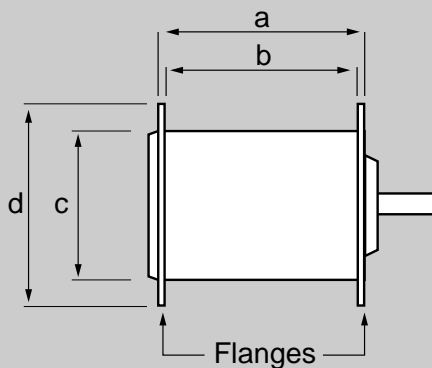
Note: “YY” designates the roller width (7, 10, 15, 20 or 30 mm). See roller dimensions on the reverse side.

Dimensions



All dimensions in mm

Roller



Roller Dimensions

Roller Width	a	b	c	d
7 mm	9	7	13	17
10mm	12	10	13	17
15mm	17	15	13	17
20mm	22	20	13	17
30mm	32	30	13	17

Note

Rollers are offered in single-flanged versions

All dimensions in mm

Specifications

Accuracy	±1.5% FS or better
Sensor Excitation	12–18 VDC, 21 mA
Middle Roller Deflection	0.5 mm (maximum)
Sensor Output	0–1 VDC (standard), 0–10 VDC (optional), proportional to tension
Overload Rating	150% FS
Housing Material	Aluminum

Spacing of Outer Rollers	40mm
Roller Diameter (Root)	13mm
Roller Material	
Standard	Aluminum
Optional	Chrome-Plated Steel (ST) Plastic (PL)
Maximum Linear Speed	1000 m/min
With “K” option	3000 m/min
Operating Temperature	40 to 105 °F (5–40 °C)

Specifications subject to change without notice.