

Bulletin N610-1

# Ultra-reliable MECHANICAL TENSION METERS

## DX2 Series

10 ranges, 5–50 g to 5–20 Kg

A precise jeweled movement, choice of ball bearing mounted rollers and rugged cast alum-inum housing makes the DX2 ideal for the toughest production floor application.

Built-in mounting holes permit fixed installation for continuous in-line use.

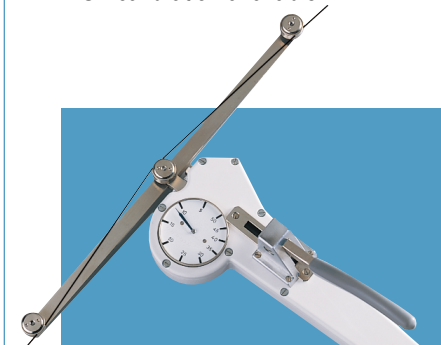
### FEATURES

- Thumb-operated, roller-shifting mechanism and exclusive snare-guide automatically guides the moving filament into the V-grooves eliminating breaks and snags.
- Front filament loading permits the operator to observe running material, rollers and dial face at all times.



- DX2's are individually calibrated for highest accuracy
- DX2's hard-coated aluminum, V-grooved rollers are rated for speeds up to 2000 m/min or, optionally, up to 5000 m/min.
- Built-in material thickness compensator maximizes accuracy when using filaments of different diameters.\*

- NIST calibration available.



*Model DXL-5K with 250 mm spacing between outer rollers.*

| Model Prefix | DX2  |        |        |        |         |          |           |          |         |         | DXX     |         |
|--------------|------|--------|--------|--------|---------|----------|-----------|----------|---------|---------|---------|---------|
| Range Code   | 5    | 12     | 20     | 40     | SP      | EX       | 200       | 500      | 1K      | 2K      | 3K      | 5K      |
| Tensions (g) | 5–50 | 10–120 | 10–200 | 10–400 | 20–1000 | 100–1000 | 200 –2000 | 400–5000 | 2–10 Kg | 5–20 Kg | 5–30 Kg | 5–50 Kg |

Complete model number includes: DX2 plus range code, e.g., DX2-200.

\* Supplied on DX2-SP models and higher ranges.

## DX2 Series

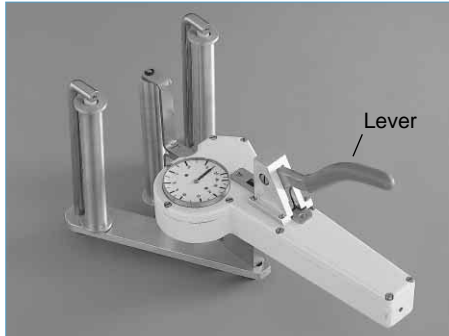
### Options

#### Air Damping (A)



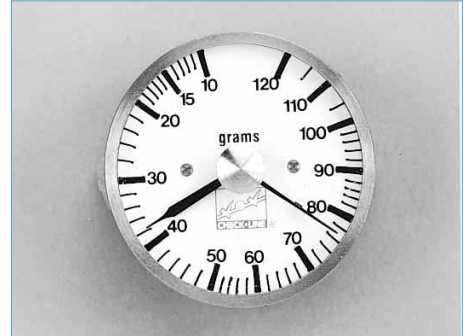
An adjustable, precision air dashpot provides steady tension readings as tensions fluctuate.

#### Lever (L)



A heavy-duty, lever-operated mechanism moves the outer rollers for easy acquisition of the running filament. Recommended for models of 10 Kg or higher.

#### Memory Pointer (M)



Designed to retain the peak tension value as tensions fluctuate. Manually reset by using the knob located in the center of the dial.

#### High Speed Bearings (K)



Rated for speeds up to 3500 m/min.

#### Ultra High Speed Roller Assembly (HS)



Rated for speeds up to 5000 m/min.

### Model Data & Specifications

|                                   |   |                                   |  |
|-----------------------------------|---|-----------------------------------|--|
| <b>Accuracy*</b>                  | ±1% of full scale or<br>±1 graduation mark on scale | <b>Roller Material (standard)</b> | Hard-coated aluminum   |
| <b>Diameter of Scale</b>          | 41 mm   | <b>" " (optional)</b>             | Hardened steel (ST)<br>Chromed Steel (W)<br>Ceramic (CE)<br>Plastic (PL) |
| <b>Maximum Speed (standard)</b>   | 2000 m/min  | <b>Housing material</b>           | Die-cast aluminum  |
| <b>" " (optional)</b>             | 3500 m/min (K)                                      | <b>Dimensions</b>                 | 225 x 90 x 44 mm<br>(8.6" x 3.5" x 1.7")                                 |
| <b>" " "</b>                      | 5000 m/min (HS)                                     | <b>Weight</b>                     | 500 g (1.1 lbs.), approx.  |
| <b>Outer roller distance, c:c</b> |   |                                   |  |
| DX2-5 to DX2-EX                   | 38 mm   |                                   |  |
| DX2-200 to DX2-1K                 | 100 mm  |                                   |  |
| DX2-2K                            | 150 mm  |                                   |  |
| DXX-3K to DXX-5K                  | 250 mm  |                                   |  |

\* Using factory material standards and procedures. Special calibration using customer sample is available.

Specifications subject to change without notice.