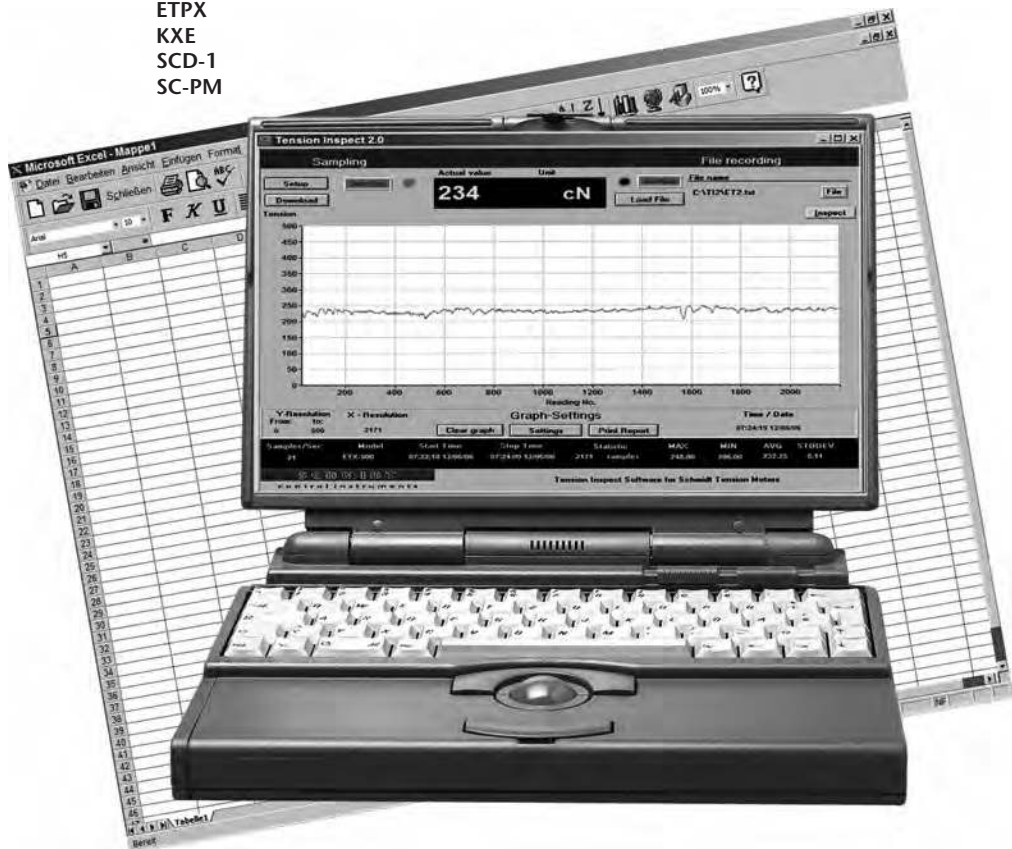


# TENSION INSPECT Operating Instructions

Valid as of: 01.07.2006 • Please keep the manual for future reference!

Tension Meter

Model ETX  
ETPX  
KXE  
SCD-1  
SC-PM



# Contents

<b>1 The TENSION INSPECT Program</b> .....	<b>3</b>
1.1 System Requirements.....	3
1.2 Installing TENSION INSPECT .....	3
1.3 Using TENSION INSPECT .....	4
1.3.1 Basic Settings.....	5
1.3.2 Starting and Stopping the Tension Value Display .....	5
1.3.3 Printing, Data Transfer and Data Analysis .....	6
1.3.4 Logging the Tension Data on the PC .....	7
1.3.5 Changing the File Name.....	7
1.3.6 Recalling the Stored Tension Data.....	7
1.3.7 The DOWNLOAD Button (Available only for ETX and ETPX) .....	8
1.3.7.1 Downloading the Tension Data from the ETX (ETXP) to the PC.....	9
1.3.7.2 Storing the Tension Data in the PC .....	9
1.3.7.3 Recalling the Stored Tension Data .....	9
1.3.7.4 Printing, Data Transfer and Data Analysis.....	10
<b>2 Correspondence</b> .....	<b>11</b>

# 1 The TENSION INSPECT Program

## 1.1 System Requirements

- Computer: PC/AT compatible computer
- Operating system: Windows® 95 / 98SE / ME / NT / 2000 / XP / 7 / 8 / 8.1
- Hard disk space: Approx. 5 MB
- Installation: CD-ROM drive

## 1.2 Installing TENSION INSPECT



To be able to restore the original files in case problems occur after the installation, you should make a backup of your hard disk contents before you start installing. In no event will HANS SCHMIDT & Co GmbH be held liable for any data loss or damage.

1. Insert the CD-ROM with the TENSION INSPECT program into the CD-ROM drive.
2. Open the “Start” menu and choose “Run.”
3. Enter the drive character for your CD-ROM drive, followed by a colon, a backslash and the program name “SETUP.”




4. Click “OK” to confirm your entry.
5. Follow the instructions on the screen.
6. At the end of the installation process, click the “RESTART NOW” button; this will restart the computer.

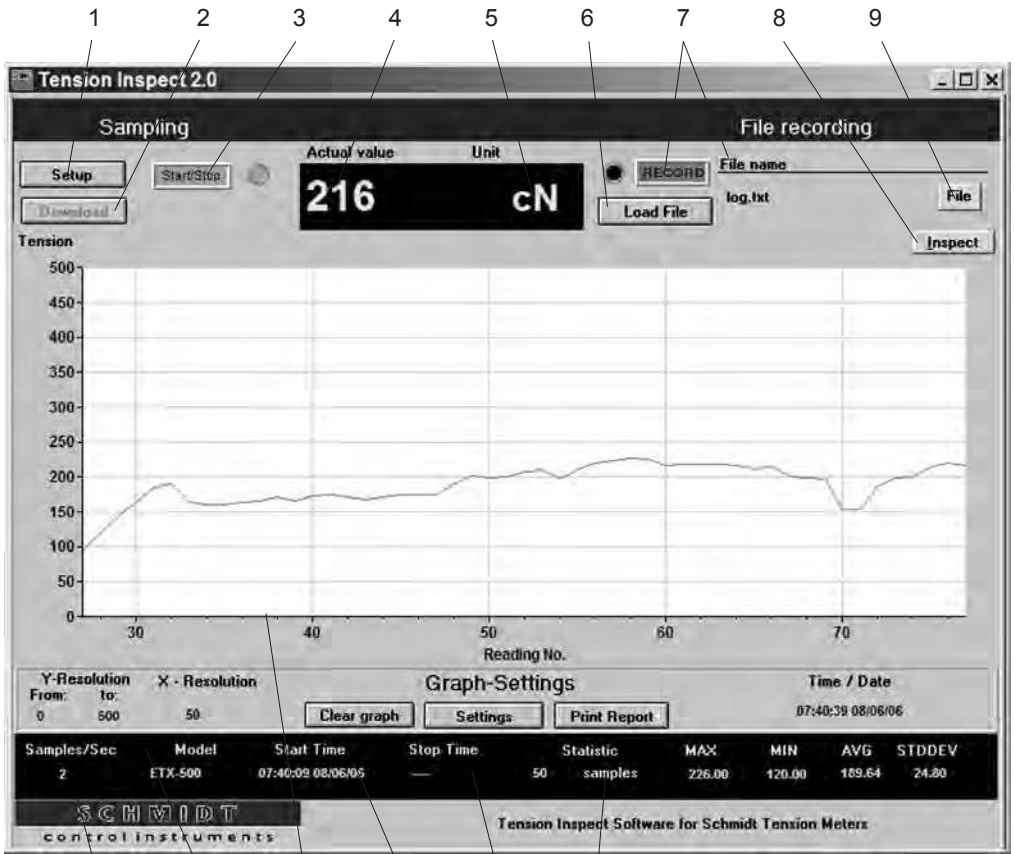
**1** Before you create a desktop shortcut, please make sure you have entered the complete path with all parameters in the TARGET box:

C:\TI2\TPRUN.EXE TI2.tst



### 1.3 Using TENSION INSPECT

- Double-click the TENSION INSPECT icon  to start the program.  
The program window opens.



- |    |         |                    |                                   |
|----|---------|--------------------|-----------------------------------|
| 1  | Button  | SETUP              | Chapter 1.3.1                     |
| 2  | Button  | DOWNLOAD           | Chapter 1.3.7                     |
| 3  | Button  | START STOP         | Chapter 1.3.2                     |
| 4  | Display | ACTUAL VALUE       | Current reading                   |
| 5  | Display | UNIT               | Unit of measure of the reading    |
| 6  | Button  | LOAD FILE          | Chapter 1.3.7                     |
| 7  | Button  | RECORD             | Chapter 1.3.4                     |
| 8  | Button  | INSPECT            | Chapter 1.3.3                     |
| 9  | Button  | FILE               | Chapter 1.3.5                     |
| 10 | Display | STATUS LINE        | Display of statistical values     |
| 11 | Display | Y AND X RESOLUTION | Graph resolution for X and Y axes |
| 12 | Display | TENSION            | Readings as graph                 |
| 13 | Button  | CLEAR GRAPH        | Clears the GRAPH display          |
| 14 | Button  | SETTINGS           | Chapter 1.3.1                     |
| 15 | Button  | PRINT REPORT       | Prints the displayed graph        |

### 1.3.1 Basic Settings

#### Requirement:

The tension meter to be used must be connected to the PC.

#### To edit the settings:

- Click the SETUP button.

The setup dialog box opens.

You can now either keep the default values preset in the input boxes or customize them for your specific requirements.

The figure below shows the factory-preset defaults for a tension meter model ETX-500.

Enter the COM PORT (1-4) to which the tension meter is connected

TEST button

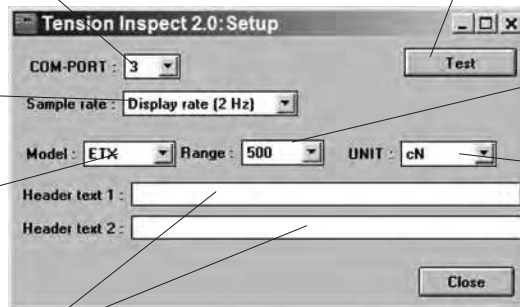
For testing the connection between the PC and the connected tension meter

Select the sample rate

Select the tension range

Select the tension meter model

Select the unit of measure



Enter text for the 1st and 2nd header lines describing the stored data

### 1.3.2 Starting and Stopping the Tension Value Display

#### Requirements:

- Click the CLEAR GRAPH button.

All readings shown in the TENSION display, if any, are cleared.

#### Starting:

- Click the red START STOP button to activate the display of tension values.

The button color changes to green (function enabled).

#### Tension value display:

TENSION display	Current graph
ACTUAL VALUE display	Current digital value
STATUS LINE display	Continuously updated statistics

#### Stopping:

- Click the now green START STOP button.

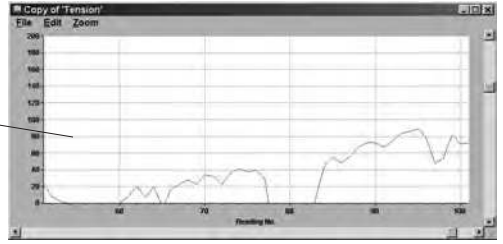
The display of the tension values stops.

The button color changes back to red (function disabled).

### 1.3.3 Printing, Data Transfer and Data Analysis

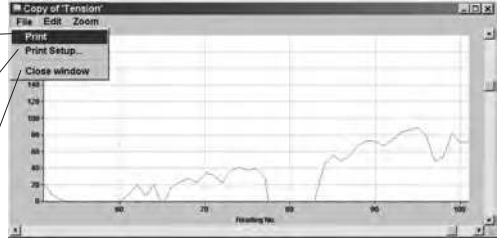
#### Requirement:

- Click the INSPECT button.  
The COPY OF TENSIONS window opens and shows the current readings as a graph.



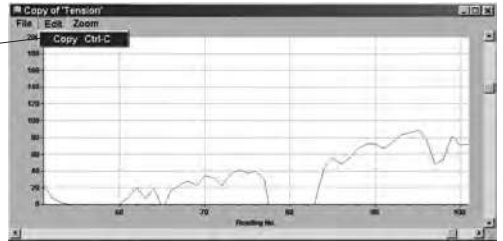
#### Printing:

- The PRINT option sends the print command to the connected printer.
- The PRINT SETUP option opens the printer setup dialog box.
- The CLOSE option closes the COPY OF TENSIONS window.



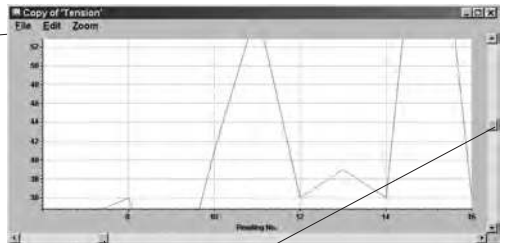
#### Data transfer:

- The COPY option copies the readings shown in the INSPECT window. The copied readings can be inserted into the MS-EXCEL® Windows application as a table or a graph by using the "PASTE SPECIAL" option.



#### Data analysis:

- The ZOOM option opens the selection menu for enlarging or reducing the graph of the readings.



With the scrollbars at the bottom and right of the screen, you can move the displayed measurement curve around horizontally and vertically.

### 1.3.4 Logging the Tension Data on the PC

- Click the red RECORD button to start continuous data logging.  
The button color changes to green (function enabled) and the label changes from RECORD to STOP.
- The LOGFILENAME window opens and you are prompted for a file name.
- Start the measuring cycle as described in Chapter 1.3.2.
- The program now continuously logs all the received readings.
- You can save any number of readings in this file while the file is open.



**After you have closed a file containing stored readings, you cannot add any new readings to this file when you reopen it. You have to create a new file with a different file name.**

### 1.3.5 Changing the File Name

- Click the FILE button.
- The LOGFILENAME window opens.
- You can now change the name of a file in the input box at the bottom of the window.
- Click the SAVE button.
- The entered file name is saved and the LOGFILENAME window closes.

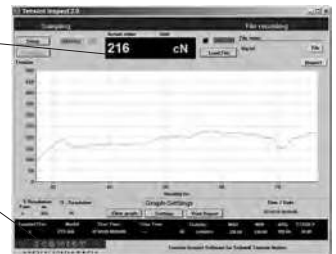
### 1.3.6 Recalling the Stored Tension Data

- Click the LOAD FILE button.
- The LOGFILENAME window opens.



The selected tension data file is opened and displayed as a graph.

The corresponding statistics are shown in the STATUS LINE.



### 1.3.7 The DOWNLOAD Button

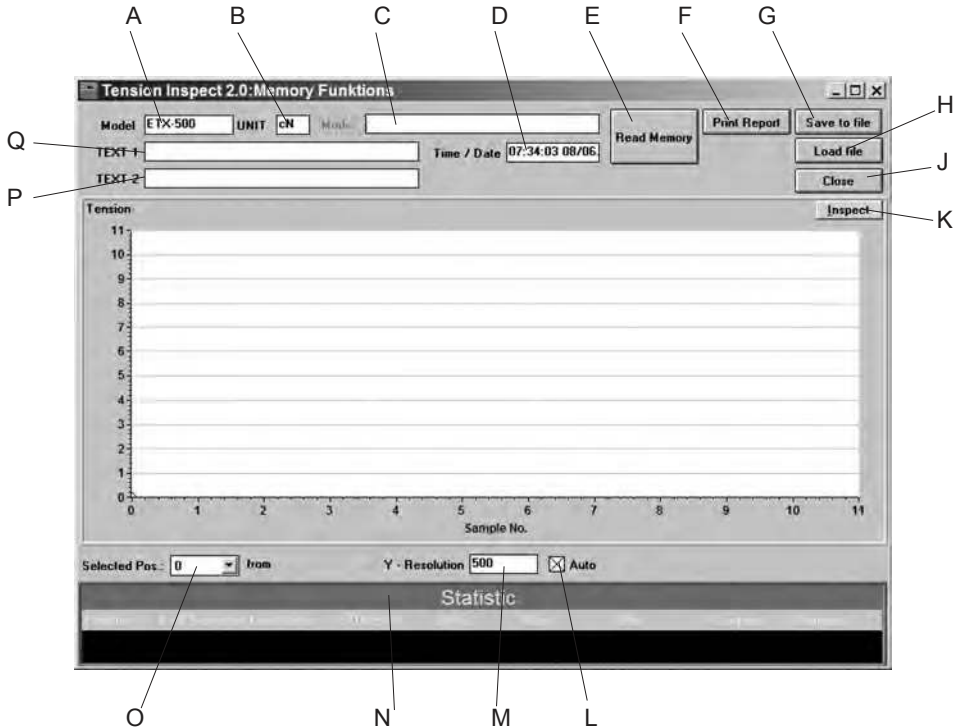
(Available only for ETX and ETPX)

With the TENSION INSPECT program you can download all the tension data stored in the memory of the connected tension meter.

**To start the DOWNLOAD:**

- Click the DOWNLOAD button.

The MEMORY FUNCTIONS window opens.



- |   |           |   |                                     |
|---|-----------|---|-------------------------------------|
| A | Display   | MODEL   | Indicates the tension meter model   |
| B | Display   | UNIT  | Indicates the unit of measure       |
| C | Display   | MODE  | Memory mode for data logging        |
| D | Display   | TIME/DATE   | Indicates the download date         |
| E | Button    | READ MEMORY   | Chapter 1.3.7.1                     |
| F | Button    | PRINT REPORT  | Prints the displayed graph          |
| G | Button    | SAVE TO FILE  | Chapter 1.3.7.2                     |
| H | Button    | LOAD FILE   | Chapter 1.3.7.3                     |
| J | Button    | CLOSE   | Closes the MEMORY FUNCTIONS window  |
| K | Button    | INSPECT   | Chapter 1.3.7.4                     |
| L | Button    | AUTO  | Automatic Y resolution ON/OFF       |
| M | Input box | Y RESOLUTION  | Y resolution of the TENSION display |
| N | Display   | STATISTIC   | Display of statistical values       |
| O | Menu      | SELECTED POS.   | Chapter 1.3.7.1                     |
| P | Input box | for entering the 1st header line describing the stored data |                                     |
| Q | Input box | for entering the 2nd header line describing the stored data |                                     |



### 1.3.7.1 Downloading the Tension Data from the ETX (ETXP) to the PC

#### Requirements:

- Tension meter connected to the PC.
- Tension meter switched on.

#### To download the tension data:

- Select the relevant memory number of the tension meter from the SELECTED POS. menu.
- Click the READ MEMORY button.  
The tension data stored in the tension meter under the selected memory number are read into the PC.

#### Tension value display:

TENSION display	Current graph
STATUS LINE display	Statistics

### 1.3.7.2 Storing the Tension Data in the PC

- Click the SAVE TO FILE button.  
The LOGFILENAME window opens.
- You can now enter a file name in the input box at the bottom of the window.
- Click the SAVE button.  
The current readings are stored and the LOGFILENAME window closes.

### 1.3.7.3 Recalling the Stored Tension Data

- Click the LOAD FILE button.  
The LOGFILENAME window opens.



The selected tension data file is opened and displayed as a graph.

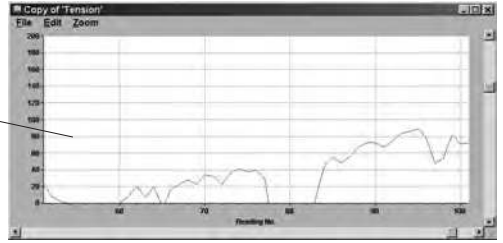
The corresponding statistics are shown in the STATUS LINE.



### 1.3.7.4 Printing, Data Transfer and Data Analysis

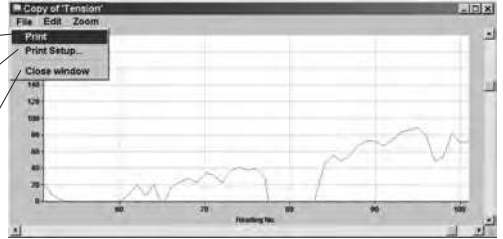
#### Requirement:

- Click the INSPECT button.  
The COPY OF TENSIONS window opens and shows the current readings as a graph.



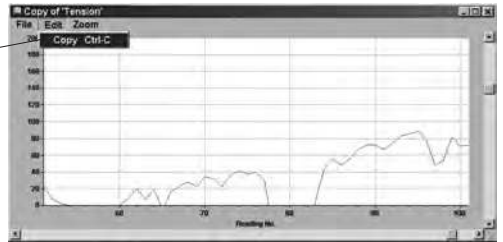
#### Printing:

- The PRINT option sends the print command to the connected printer.
- The PRINT SETUP option opens the printer setup dialog box.
- The CLOSE option closes the COPY OF TENSIONS window.



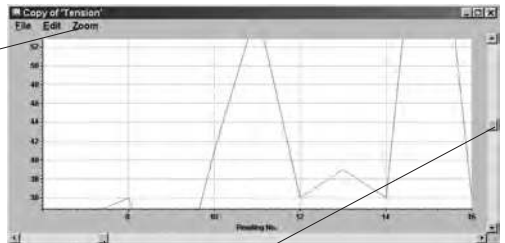
#### Data transfer:

- The COPY option copies the readings shown in the INSPECT window. The copied readings can be inserted into the MS-EXCEL® Windows application as a table or a graph by using the "PASTE SPECIAL" option.



#### Data analysis:

- The ZOOM option opens the selection menu for enlarging or reducing the graph of the readings.



With the scrollbars at the bottom and right of the screen, you can move the displayed measurement curve around horizontally and vertically.

## 2 Correspondence

Should you have any questions regarding the program or Operating Instructions, or their use, please indicate above all the software version number.

### Shipping instructions:

We kindly ask for return free of charge for us, if possible by airmail parcel. All occurring charges, if any (such as freight, customs clearance, duty etc.), will be billed to customer. For return from foreign countries, we ask you to include a proforma invoice with a low value for customs clearance only, e.g. 50 Euro, each and to advise the shipment in advance by fax or eMail.

### Address:

**HANS SCHMIDT & Co GmbH**  
**Schichtstr. 16**  
**D-84478 Waldkraiburg**  
**Germany**

Notes:

---

---

**SCHMIDT-Test-Instruments**  
*indispensable in production monitoring,  
quality control and automation*  
**We solve your measuring problems:**



*Tension Meter*



*Force Gauge*



*Torque Meter*



*Tachometer*



*Speed- and Lengthmeter*



*Electronic Lengthmeter*



*Stroboscope*



*Screen Printing Tension Meter*



*Thickness Gauge*



*Yarn Package Durometer and Shore-A Durometer*



*Sample Cutter*



*Balance*



*Moisture Meter*



*Leak Tester*



*Softometer*

