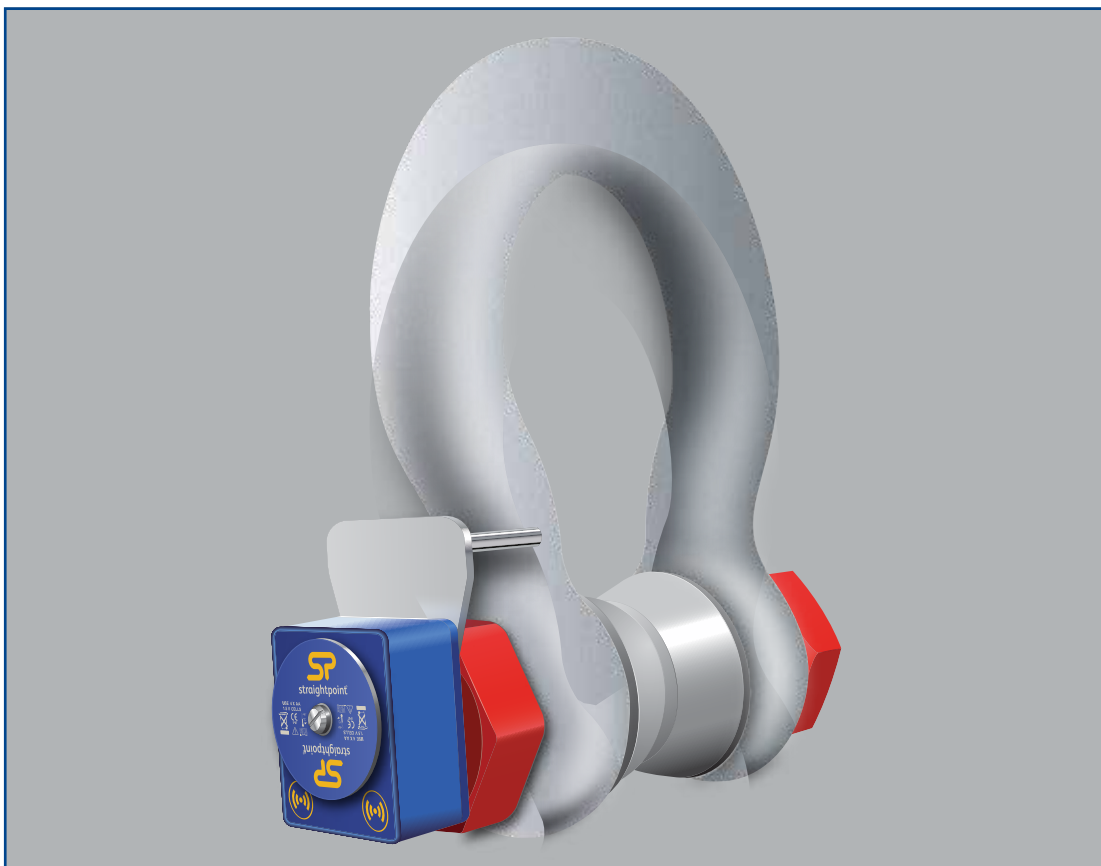




wireless loadshackle



Available from stock in capacities 3.25t to 120t and available up to 1,550t, the WLS is manufactured from Crosby's industry leading 2130 Carbon and 2140 Alloy Bolt Type Anchor Shackles (3.25te – 120te) and the GN H10 Alloy Bolt Type Anchor Shackle (200te on up).

Straightpoint's Wireless Loadshackle provides the perfect solution to limited headroom applications. Each Wireless Loadshackle is proof tested, then equipped with a hard anodised aluminium electronics enclosure. Contained within this aluminium enclosure is a new internal chassis providing IP67/NEMA6 environmental protection even with the battery cover plate missing.

Featuring industry leading wireless technology and range, the Wireless Loadshackle is supplied with an update rate of 3Hz and can be easily configured to run at industry leading speeds of up to 200Hz. Data is transmitted wirelessly utilising the latest in IEEE 802.15.4 (2.4 GHz) technology providing safe, high integrity, error free transmission of both static weight and dynamic load to a wireless handheld controller or wireless Windows PC data logging software package. Our wireless data logging software allows for simultaneous control, display and real time data logging of up to 100 Straightpoint telemetry load cells. Logged data is captured in a .csv file format and opens in MS Excel providing easy visual presentation, analysis of logged data, and simple test certificate generation.

Our Wireless Loadshackle utilises easily sourced AA alkaline batteries and features advanced circuitry designed to protect the unit from damage associated with incorrectly installed batteries. This advanced circuitry extends battery life and the use of easily sourced alkaline batteries eliminates issues associated with rechargeable battery pack charging, failure and replacement. Our huge range of tooling allows us to calibrate in shackle for extra accuracy unlike many other load cell manufacturers. A full array of wireless accessories are also available including signal boosters, LED wireless scoreboards and base stations with analogue (4-20mA, 0-10v, 0-5v) or digital (RS232/485, Modbus RTU, and ASCII serial communications protocol) outputs. There is no better choice than Straightpoint's Wireless Loadshackle for limited headroom applications.

Features and benefits:

- Proprietary 2.4 GHz wireless
- Error free data transmission
- Environmentally sealed
- Internal antennae
- Remote on/off
- Industry leading wireless range
- Unrivalled resolution
- Unmatched battery life
- Low headroom
- Lightweight
- Each WLS is supplied with a load-centring bobbin
- Design validated by F.E.A.

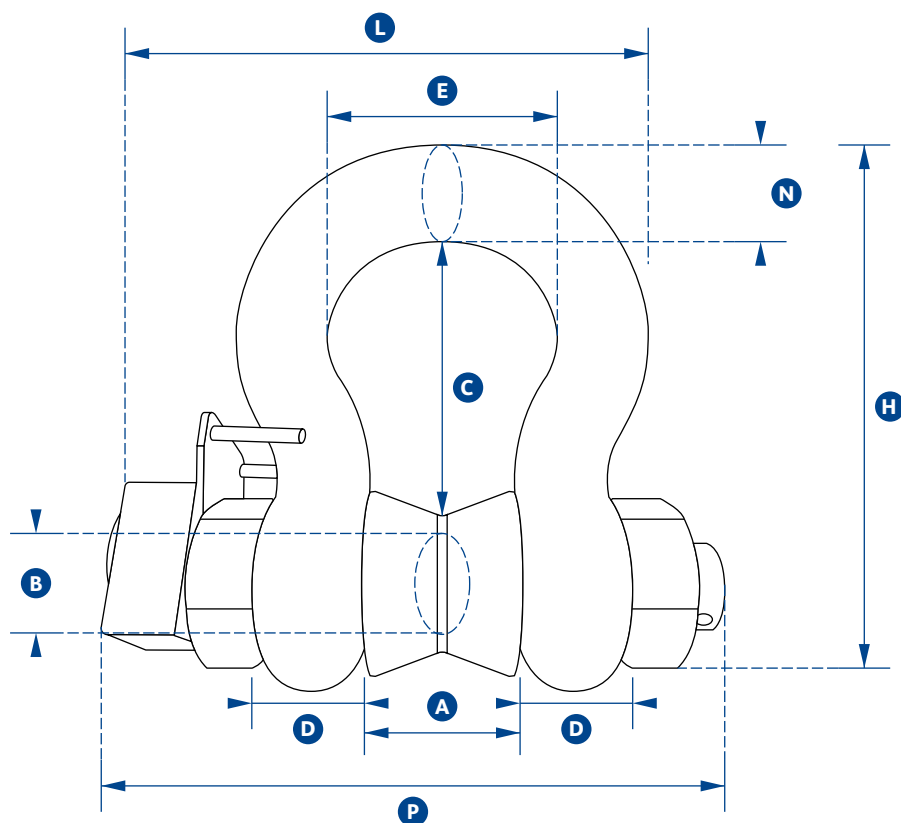


ABQ INDUSTRIAL
PRECISION. RELIABILITY. QUALITY.

Distributed by: ABQ Industrial LP USA
Tel: +1 (281) 516-9292 / (888) 275-5772 **eFax:** +1 (866) 234-0451
Web: <https://www.abqindustrial.net> **E-mail:** info@abqindustrial.net

metric specifications

wireless loadshackle



Part Number	WLS3.25T	WLS6.5T	WLS12T	WLS25T	WLS55T	WLS85T	WLS120T	WLS200T	WLS300T	WLS400T
Capacity	3.25te	6.5te	12te	25te	55te	85te	120te	200te	300te	400te
Resolution	0.005te	0.005te	0.01te	0.02te	0.05te	0.05te	0.1te	0.2te	0.5te	0.5te
Units	tonne									
Weight	2.8kg	3.2kg	8kg	18kg	25kg	45kg	85kg	254kg	374kg	614kg
Safety Factor	5:1 when used with load bobbin									
Battery Type	Load cell 4 x AA Alkaline									
Battery Life	Load cell 1,200 hours continuous									
Operating Temp	-10°C to +50°C									
Accuracy	±1% of applied load									
Frequency	2.4 GHz									
System Range	700 metres									
Data Rate	3 updates per second									
Protection	IP67									
Dimension A	26.9	36.6	51.5	73	82.5	105	127	180	205	230
Dimension B	19.1	25.4	35.1	51	57	70	82.5	125	150	175
Dimension C	60.5	84	119	178	197	267	330	334	398	440
Dimension D	16	22.4	31.8	44.5	51	66.5	76	120	130	165
Dimension E	42.9	58	82.5	127	164	184	200	290	305	325
Dimension H	106	148	210	313	348	453	546	810	950	1100
Dimension L	132	158	196	281	306	368	408	580	615	705
Dimension N	17.5	24.6	35.1	57	61	79	92	120	130	165
Dimension P	148	180	218	293	317	394	441	570	620	715

Larger capacities up to 1000te (price on application).