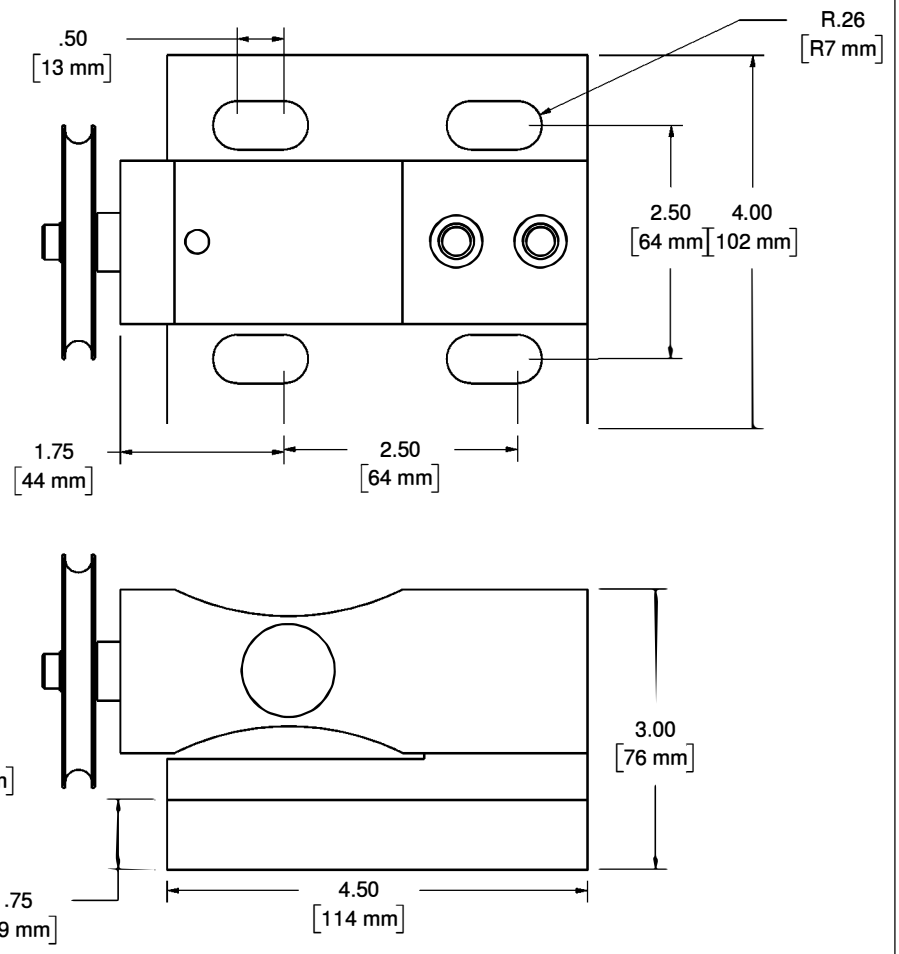
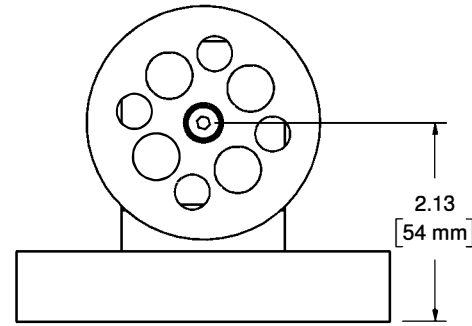
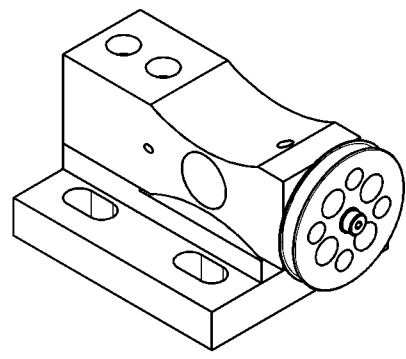


Distributed by: ABQ Industrial LP USA
 Tel: +1 (281) 516-9292 / (888) 275-5772 eFax: +1 (866) 234-0451
 Web: https://www.abqindustrial.net E-mail: info@abqindustrial.net

ABQINDUSTRIAL
 PRECISION. RELIABILITY. QUALITY.

Typical Transducer Specifications

- *Tension Range: Supplied to Customer's requirements.
- *Contact Elements: To fit application.
- *Operating Temperature: 70' ± 25' F. (Special ranges available)
- *Connecting Terminals: 5 pin Amphenol plug or terminated ends.
- *Excitation Voltage: 4-10 VDC.
- *Bridge Resistance: 350 ohms nominal.
- *Output Signal: 1.0 - 2.0 mv/V nominal.
- *Resistance to Ground: Exceeding 500 Megaohms.
- *Zero Balance: Less than 1.5% FS
- *Drift at Midpoint: 0.2%
- *Noise Level: Less than 0.2%
- *Linearity: 0.5%
- *Combined Linearity & Hysteresis: ± .75%
- *Total Error: 1% FS
- *Overload Tension: 50% Overated
- *Shielded Cable: 10' standard length.



Revision History				
Zone	Rev.	Description	Date	Approval
N/A	1	MODELED AND REDRAWN	9-15-14	M. BROCKMAN

Application Note:

Roller configuration adjustable to meet specific applications. For optimum accuracy evenly guide material over pulley with a minimum wrap angle of 12'. For best accuracy keep wrap angle as consistent as possible.

Material	ALUMINUM	Finish	CLEAR ANNOIDIZED	Heat Treat		
DIMENSIONAL TOLERANCES UNLESS OTHERWISE SPECIFIED				TITLE		
.XXXX	.XXX	.XX	ANGLE	NOTCHED BEAM TRANSDUCER ASSEMBLED TO PEDESTAL		
± .0005	± .005	± .01	± 1°			
Scale	No. Req'd 1					
Next Assy				Drawn M. BROCKMAN	Date 9-15-14	
				Checked	Date	
				Approved	Date	
				Size	Drawing Number	REV
				E-095-01		1