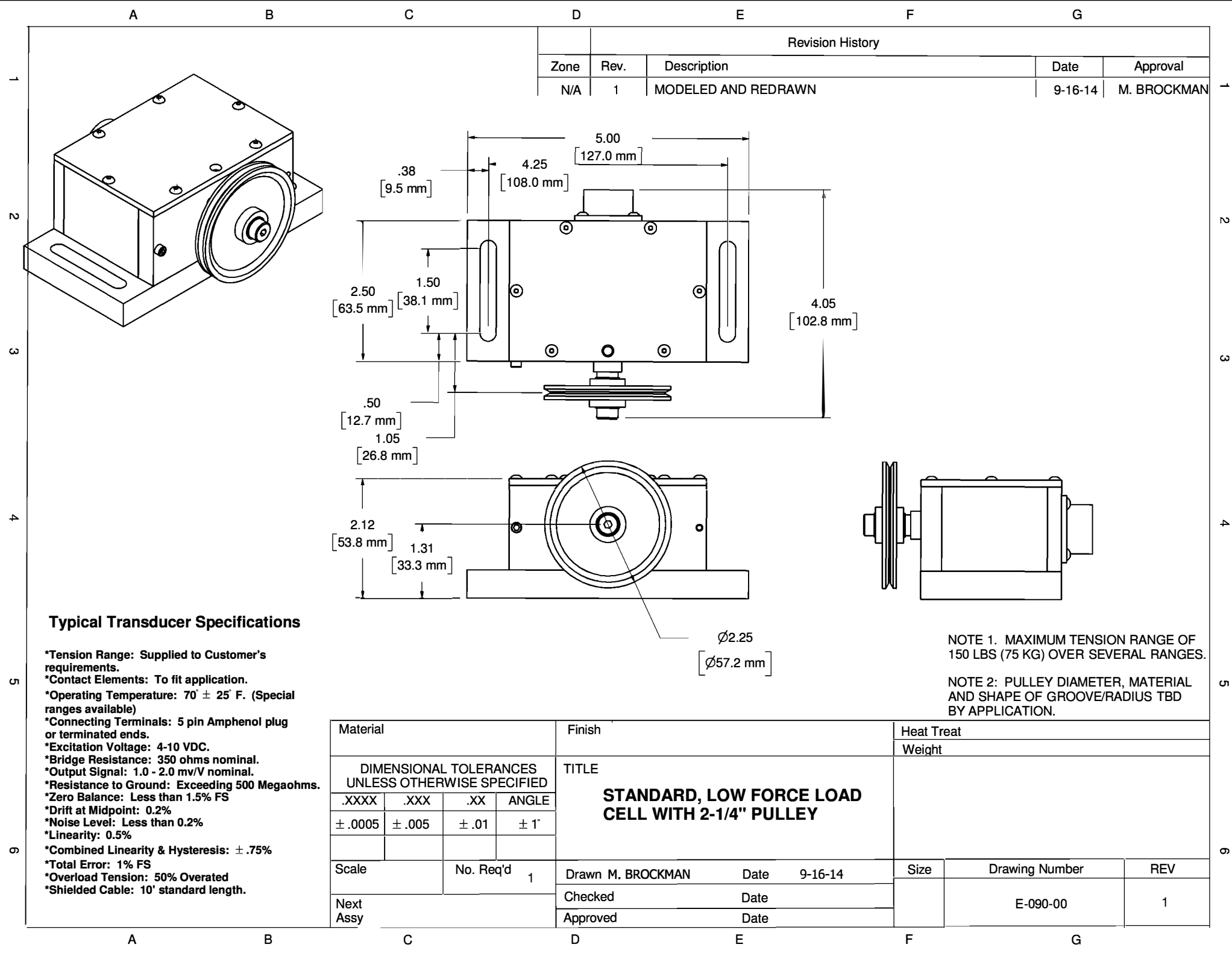


Distributed by: ABQ Industrial LP USA
 Tel: +1 (281) 516-9292 / (888) 275-5772 eFax: +1 (866) 234-0451
 Web: https://www.abqindustrial.net E-mail: info@abqindustrial.net



Revision History				
Zone	Rev.	Description	Date	Approval
N/A	1	MODELED AND REDRAWN	9-16-14	M. BROCKMAN

Typical Transducer Specifications

- *Tension Range: Supplied to Customer's requirements.
- *Contact Elements: To fit application.
- *Operating Temperature: 70 ± 25° F. (Special ranges available)
- *Connecting Terminals: 5 pin Amphenol plug or terminated ends.
- *Excitation Voltage: 4-10 VDC.
- *Bridge Resistance: 350 ohms nominal.
- *Output Signal: 1.0 - 2.0 mv/V nominal.
- *Resistance to Ground: Exceeding 500 Megaohms.
- *Zero Balance: Less than 1.5% FS
- *Drift at Midpoint: 0.2%
- *Noise Level: Less than 0.2%
- *Linearity: 0.5%
- *Combined Linearity & Hysteresis: ± .75%
- *Total Error: 1% FS
- *Overload Tension: 50% Overated
- *Shielded Cable: 10' standard length.

NOTE 1. MAXIMUM TENSION RANGE OF 150 LBS (75 KG) OVER SEVERAL RANGES.
 NOTE 2. PULLEY DIAMETER, MATERIAL AND SHAPE OF GROOVE/RADIUS TBD BY APPLICATION.

Material		Finish		Heat Treat	
DIMENSIONAL TOLERANCES UNLESS OTHERWISE SPECIFIED		TITLE		Weight	
.XXXX	.XXX	.XX	ANGLE	STANDARD, LOW FORCE LOAD CELL WITH 2-1/4" PULLEY	
± .0005	± .005	± .01	± 1°		
Scale	No. Req'd	1	Drawn M. BROCKMAN	Date	9-16-14
Next Assy			Checked	Date	
			Approved	Date	
			Size	Drawing Number	REV
				E-090-00	1