

## EDMS

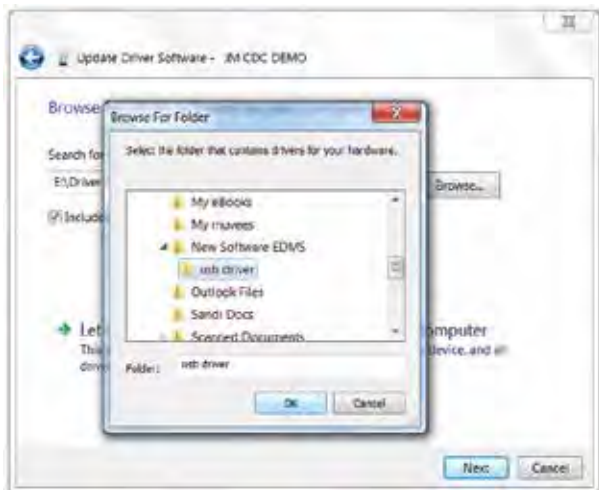
### Operation Manual

#### I. Install the USB Driver

**1.1** If this is your first time using the gauge, when you connect the gauge to the PC, a driver installation window may appear or the driver will install automatically. Make sure gauge is on to initiate process.



**1.2** Select the USB driver path, that is in the EDMS software folder location on your computer. If windows do not automatically appear, go to device manager and click on the JMCDC, then update driver software. Browse computer for location, click next.



**1.3** Click next



**1.4** Select "Install this driver software anyway".

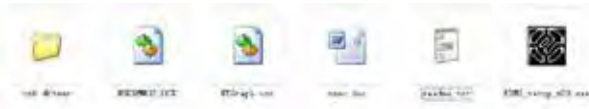


**1.5** Installation of the driver will take place.

**1.6** If the driver was installed successfully, click "Finish".

## 2. Install the EDMS Software

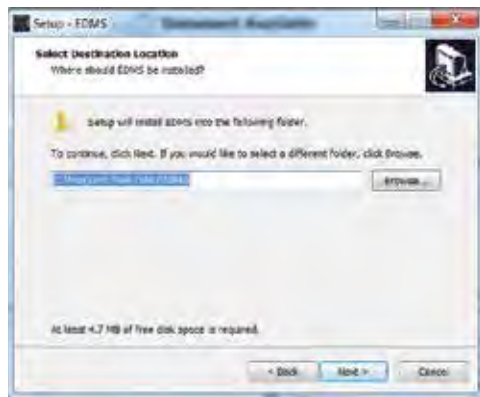
### 2.1 Double click the EDMS.exe



### 2.2 Click next



### 2.3 Set up the installation path and then click next



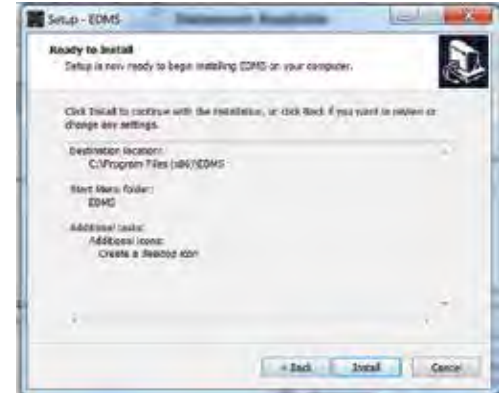
### 2.4 Click next



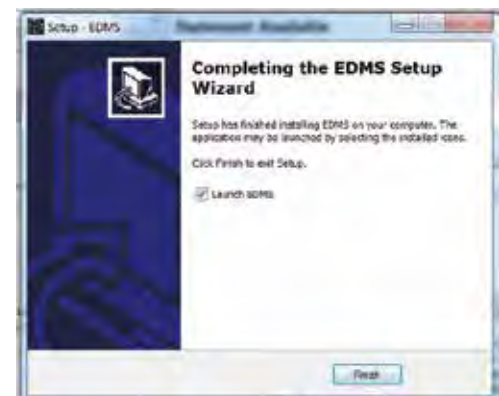
### 2.5 Check box and click next to place an icon for the EDMS on your desktop.



### 2.6 Install



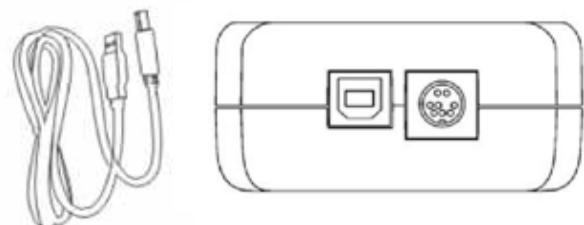
### 2.7 Click finish to install



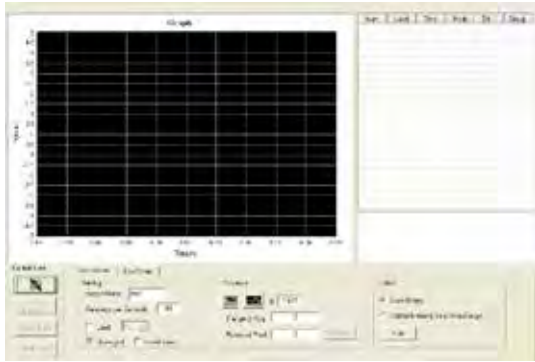
## 3. EDMS User's Guide




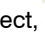
### 3.1 Connect to PC

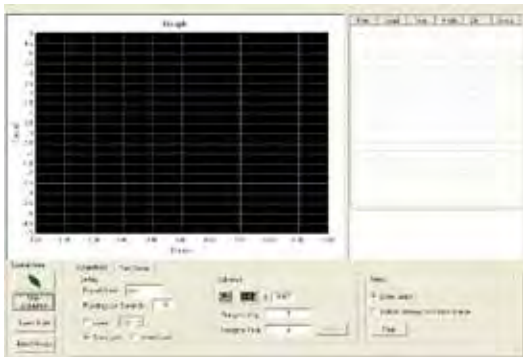
Connect the USB cable to force gauge, and then connect them to PC. NOTE: The USB driver for this software should be installed first.



### 3.2 Open the software

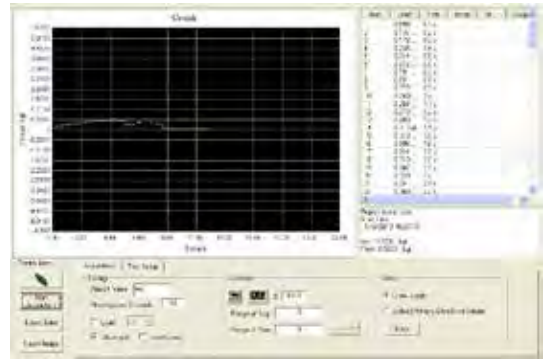


Turn on the gauge. Open EDMS by double clicking the software icon. EDMS will identify the connection with gauge automatically. If the connection is good,  icon will display, otherwise this  icon will show on the button in the control area . If  is showing, it means the connection is not normal, you can click  button to try to connect manually. If you still can not connect, the following message will display: "Can not find the device please reconnect the device or power on the device". Check the USB cable, the power of gauge, or possibly you need to install or reinstall the USB driver.



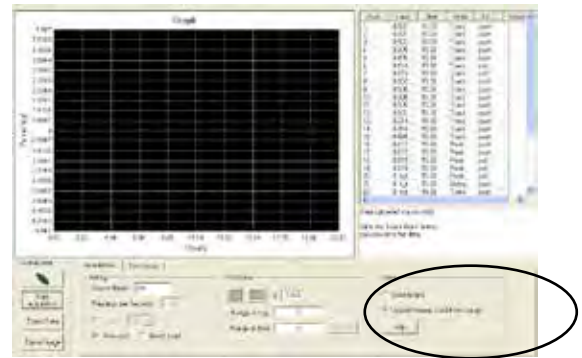
**3.3** Click the "Start acquisition" button. The software will begin to graph.

**3.4** Click the "Stop acquisition" button. The graph as well as the data in the table will stop and be visible for review.



**3.5** If you select the "Upload Memory Data From Gauge", if any data has been stored on the gauge's memory, it will be uploaded from the gauge to the program, after clicking the "Start Acquisition" button.

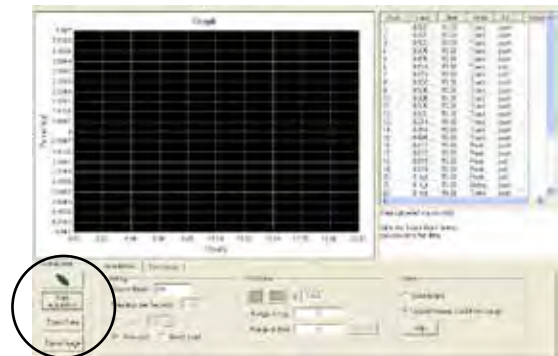
\*For customers using this software to upload data from the TTC, please review the TTC's manual for additional procedures.



### 3.6 Functions

**3.6.1** Export Data: Send data from test or uploaded from gauge in CSV format to computer.

**3.6.2** Export Image: Export or saves an image of the graph on your computer in bmp format.



### 3.6.4 Setting

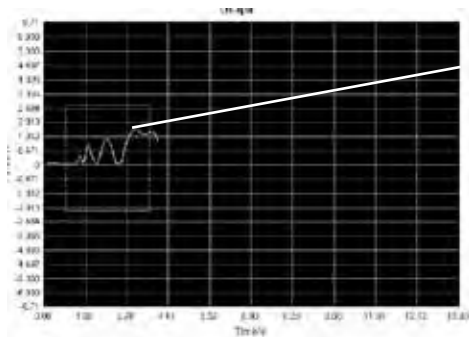
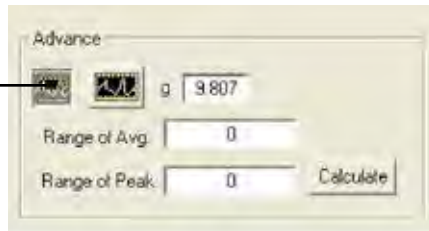


- Report Name:** Create a name of the current data set or test.
- Readings per Seconds:** Sets the number of readings per second that Software requests data from the gauge. The available range is 0 to 60 readings per second.
- Load:** Change the load units.
- Show Grid:** Turns on or off the display of the grid in the graph.
- Invert Load:** Inverts the load direction.

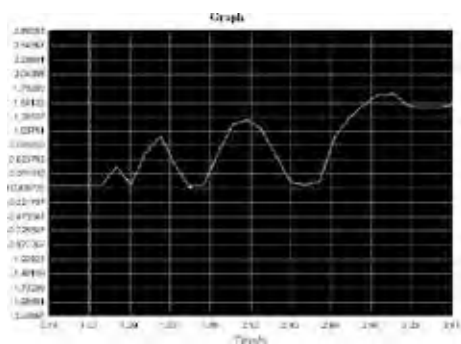
### 3.6.5 Advance


Set a zoom window with adjustable x- and y- dimensions for a specific part of the graph.

Click this icon to get the detail of the graph. Then click Calculate to retrieve the average and peak data from the highlighted area of the graph.



Click left button on mouse, then move the mouse to highlight a range on the graph.



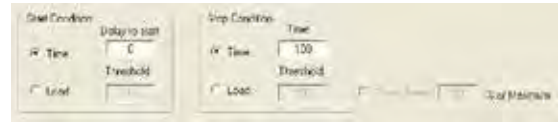
Zoomed in graph is displayed. Click the right button mouse, to get the initial graph, or click  and get the initial graph.



Click the calculate button to obtain the avg and peak data of the selected graph.

**G:** Set the gravity acceleration value

### 3.6.6 Test setup

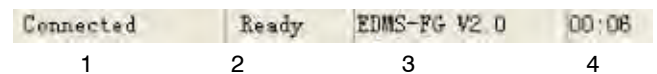


**Start Condition:** Select the option for time delay (in seconds), or load threshold that must be surpassed before test will commence.

**Stop Condition:** Select the option for time, or load that must be surpassed to end the test.

**Break Detect:** Stop the test when the load decreases to a specified percentage of the maximum (peak) reading during the test.

### 3.7 Status bar



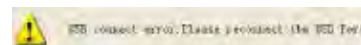
Through the status bar check the current software working condition

1. **Connected or Not Connect:** If the gauge connects to the PC when you open the software, it shows Connected or Not Connected.
2. **Ready or Running:** When "Ready" displays, the software is not connected to gauge. When displaying "Running", it means the software is working.
3. **The current version number.**
4. **The running time.**

### 3.8 Error Message



Check the connection to the gauge. Power of the gauge maybe low.



When the software is connecting to the gauge, you should not take the USB Port out, if it came out the message, you should reconnect the USB port.

### Element not found!

Copy the "Ntgraph.ocx" file to C:\WINDOWS\system32: cover the old files.

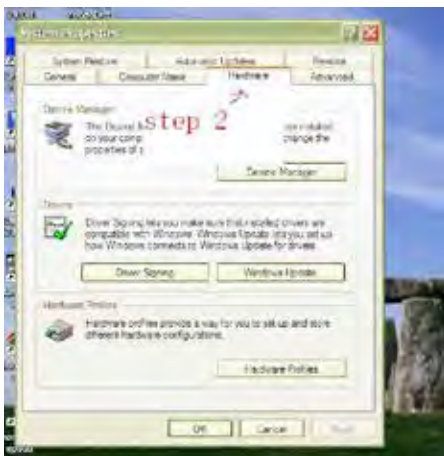
## 4. USB Driver Installation Error Solution

**4.1** If the USB driver was installed in error, you can manually install the USB driver by the following steps:

*Step1:* Right button click my computer, select the Properties



*Step 2:* Click the Hardware



*Step 3:* Check the port (COM & LPT)



If error exclamation symbol is on the JM CDC DEMO, it means the USB driver was not installed successfully.

*Step 4:* Right button click and then select "Update Driver". Then you can install the driver (see Install the USB driver)



### 4.2 Solving a serial port conflict.

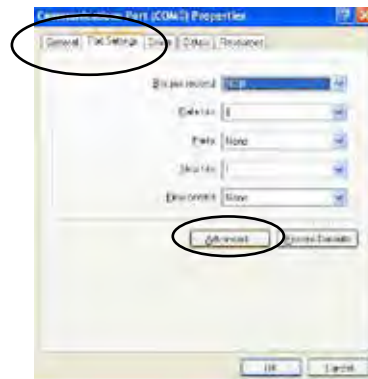


If you found your Blue tooth uses the same EFG com port, then you cannot use the EDMS software. You must change the port number, by the following steps:

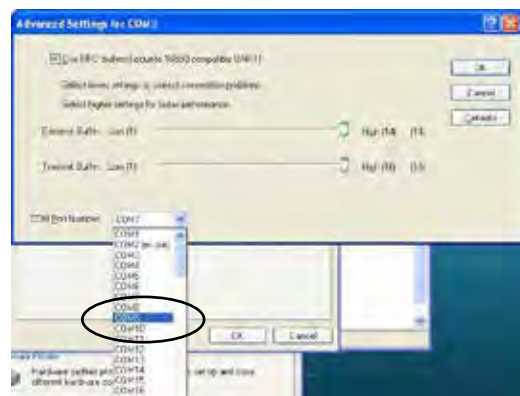
*Step 1:*



*Step 2:* Click Port Settings; Click Advanced



*Step 3:* Choose a port number to avoid the same port. Then Click OK.



*Step 4:* Click the Port (COM & LPT) Click the scan for hardware changes.



The Serial port conflict should now be resolved. Connect your gauge and start up the software to see if you can begin Acquisition as normal.