

LAQUA

Quick Manual

Portable Turbidity Meter
LAQUA-TB220





*Four AA batteries are required for use.


www.horiba-laqua.com

HORIBA

Components

 Turbidity (SDVB) standard solution vials
0.02, 20, 100, 800 NTU

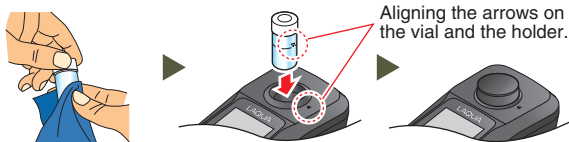
 Sample vial × 4

 Silicone oil

 Cloth

Calibration

1. Wipe the standard solution vial with the supplied cloth. Then, place it into the meter, aligning the arrows on the vial and the holder, and close the cover.



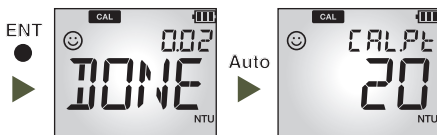
Select the calibration point using the ▲▼ keys.

*Four-point calibration is recommended for accurate measurement of the entire measurement range.

3. Press the ENT key to start calibration. When the ☺ symbol stops blinking, press the ENT key again to confirm and save the calibration data. The next calibration point will appear on the screen.



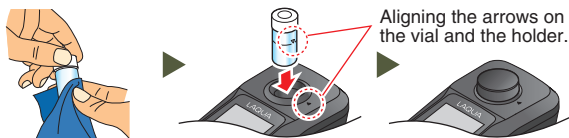
4. Repeat steps 2 and 3 for each standard solution vial. After completing the four calibration points, the screen will switch to measurement mode.



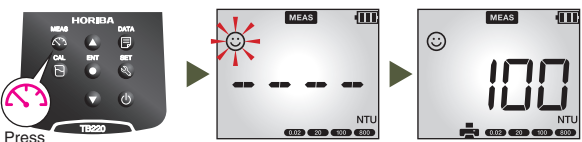
Measurement

1. Pre-wash inside of the sample vial with a portion of the sample, then fill it up to the mark with the remaining sample and tighten the cap.

2. Wipe the vial with the supplied cloth and place it into the meter. Align the arrows on the vial and the holder, then close the cover.



3. Press the MEAS key to start measurement. When the ☺ symbol stops blinking, record the reading or press the ENT key to save the data.



ECC: 3201073848

Code: GZ0000763492

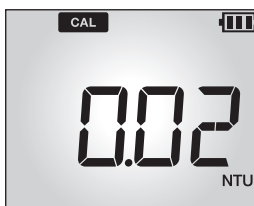
Operating Precautions

- Place the meter on a flat surface and wait for the sample level to stabilize before performing measurement.
- Before measurement, wipe off any stains or smudges, such as fingerprints, from the vial using the supplied cloth.
- If the vial becomes scratched, it needs to be replaced.
- Use standard solutions for calibration that have not expired.
- If condensation occurs on the vial, wipe it off with the supplied cloth.
- If the operating environment temperature changes suddenly, allow the meter to stand for at least 15 minutes to acclimate to the ambient temperature.

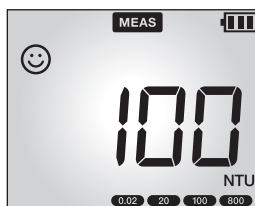


Videos

Calibration



Measurement



Meter Settings



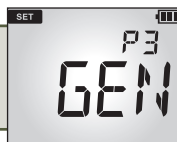
P4 CLK

- P4.1: Year, month, and day setting
- P4.2: Time setting



P3 GEN

- P3.1: Auto power off setting
- P3.2: Factory reset



P2 DATA

- P2.1: All data printing setting
- P2.2: Delete all saved data

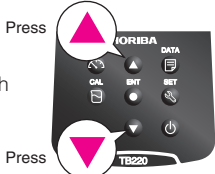


P1 C.CLr

- P1.1: Clear calibration



Press up and down keys to scroll through the setting items.



Press ENT key to confirm the settings.

