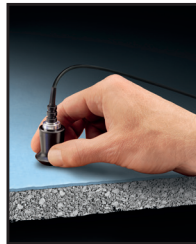


Order Code	Description
200D1	PosiTector Standard with 200 D Probe
200D3	PosiTector Advanced with 200 D Probe

PosiTector <sup>®</sup> 200 Coating Thickness Gage	Compare PosiTector Gage Bodies	
Features	Standard	Advanced
<b>NEW</b> Larger 2.8" impact resistant color touchscreen with redesigned keypad for quick menu navigation	●	●
Measure total thickness of a coating system	●	●
Measure up to 3 individual layer thicknesses in a multi-layer coating system		●
Graphics mode with screen capture for detailed analysis of the coating system		●
Statistics Mode—Instantly calculate average, standard deviation, min/max, and number of readings while measuring	●	●
Two year warranty on body AND probe	●	●
Reading Storage Capacity	1,000 per probe	250,000 in up to 1,000 batches
<b>NEW</b> Touchscreen keyboard for quickly renaming batches, adding notes, and more		●
Connection Options		
USB port for fast, simple connection to a PC and to supply continuous power. USB cable included.	●	●
WiFi technology wirelessly synchronizes with PosiSoft.net and downloads software updates		●
<b>Bluetooth 4.0 Technology</b> for data transfer to a mobile device running the PosiTector App or optional portable printer. <b>BLE API</b> available for integration into third-party software.		●



Removeable Cabled Probe	Probe Model 200 D	
	<b>Typical Applications:</b>	Thick, soft coatings such as polyurea, asphaltic neoprene, very thick polymers, etc.
	<b>*Measurement Range:</b>	50 to 7600 $\mu\text{m}$ 2 to 300 mils
	<b>Accuracy:</b>	$\pm (20 \mu\text{m} + 3\% \text{ of reading})$ $\pm (1 \text{ mil} + 3\% \text{ of reading})$
	<b>**Minimum Individual Layer Thickness:</b>	500 $\mu\text{m}$ 20 mils
	<b>Certified Thickness Standard</b>	STDP1 Visit <a href="http://www.defelsko.com/coating-thickness-standards">www.defelsko.com/coating-thickness-standards</a> for more details.
<p>*Range limits apply to polymer based coatings only. 200 D probe polyurea range is 50 to 5000 <math>\mu\text{m}</math> (2 to 200 mils). **For multiple layer applications only. Dependent on material to be tested.</p>		

200 D probe measures coating thickness over concrete, fiberglass, and other non-metal substrates using ultrasonic technology.

Order Code	Description
200D1	PosiTector Standard with 200 D Probe
200D3	PosiTector Advanced with 200 D Probe

## All Gages Feature...

### Simple

- Ready to measure—no adjustment required for most applications
- **NEW** Larger 2.8" impact resistant color touchscreen with redesigned keypad for quick menu navigation
- **NEW** On-gage help explains menu items at the touch of a button
- RESET feature instantly restores factory settings

### Durable

- **NEW** Weatherproof, dustproof, and water-resistant—IP65-rated enclosure
- **NEW** Ergonomic design with durable rubberized grip
- Shock-absorbing protective rubber holster for added impact resistance
- Two year warranty on gage body AND probe

### Accurate

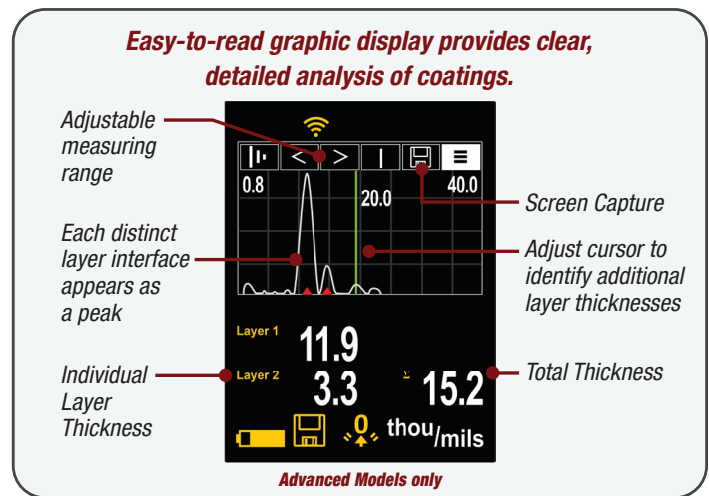
- Responsive transducers provide fast, accurate readings
- Certificate of Calibration showing traceability to NIST or PTB included
- Proven non-destructive technique conforms to ASTM D6132 and ISO 2808

### Versatile

- **NEW** Auto rotating display with Flip Lock
- Selectable display languages
- Mils/Microns switchable

### Powerful

- Continually displays/updates average, standard deviation, min/max and number of readings while measuring
- Max Thick Mode displays the deepest ultrasonic echo eliminating the need to adjust the Lo Range—ideal for ignoring unwanted surface echoes
- **NEW** Up to 30% longer battery life
- USB port for fast, simple connection to a PC and to supply continuous power. USB cable included.
- Software updates via web keep your gage current
- PosiSoft USB Drive—stored readings and graphs can be accessed using universal PC/Mac web browsers or file explorers. No software required.
- Includes PosiSoft suite of software for viewing and reporting data (see page 3)



## Award Winning Compatibility!

PosiTector body accepts all PosiTector 200, 6000, DPM, IRT, RTR, SPG, SST, SHD, BHI, and UTG probes easily converting from a coating thickness gage to a dew point meter, surface profile gage, soluble salt tester, hardness tester, or ultrasonic wall thickness gage.



**Comes complete** with PosiTector gage body, 200 D probe, couplant (ultrasonic gel), plastic shims or block, protective rubber holster, wrist strap, 3 AAA alkaline batteries, instructions, protective lens shield, convenient carrying case, Long Form Certificate of Calibration traceable to NIST or PTB, USB cable, PosiSoft Software, two (2) year warranty.

**\*SIZE:** 127 x 66 x 25.4 mm (5" x 2.6" x 1")

**\*WEIGHT:** 137 g (4.9 oz.) without batteries

**CONFORMS TO:** ASTM D6132 and ISO 2808

\*Size and weight are for the PosiTector gage body only and do not include the probe.

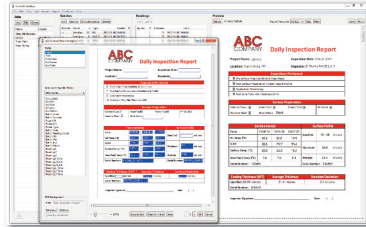
# PosiSoft® Suite of Software

Four FREE and unique ways to view and report your PosiTector and PosiTest data

## PosiSoft Desktop — PC/Mac

Powerful desktop software for downloading, viewing, printing and archiving measurement data. No internet connection required.

- Import readings directly from the gage via USB or from legacy PosiSoft desktop versions
- Synchronize measurement data including readings, notes and pictures to and from PosiSoft.net
- Import/Export Templates and Jobs to share with other users
- Import PDF forms and overlay **Custom Fields** for automatic population of inspection and measurement data
- Report preview automatically refreshes as changes are made



## PosiTector App — Mobile

Mobile app connects PosiTector Advanced instruments, the PosiTector SmartLink and the PosiTest AT-A to your *iOS* or *Android* smart device.

- Auto pairing Bluetooth BLE connection
- Automatically generate user-formatted reports and share via email, text, cloud storage services like Dropbox, and more
- Export readings to PosiSoft Desktop or synchronize readings to and from PosiSoft.net for further reporting and archival options



## Prompted Batch Mode

Create pre-defined batches with onscreen text and image prompts for each reading and upload to PosiTector 6000 gages (*Advanced models only*).

- Ideal for ensuring a consistent measurement pattern for repetitive jobs or when specific measurement locations are required
- Create and store multiple templates for different jobs

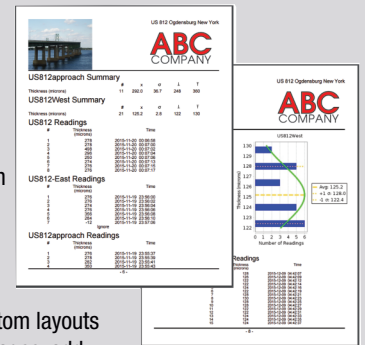


## PosiSoft Custom PDF Report Generator

Easily create reports from your measurement data in seconds.

featured on  
PosiSoft Desktop  
PosiSoft.net  
PosiTector App

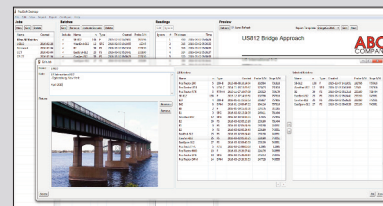
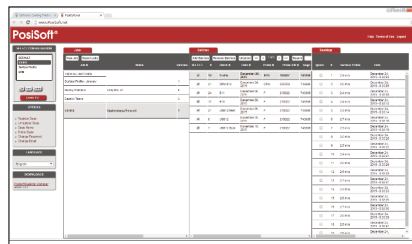
- Include inspection information such as on-site pictures, screen captures, notes, and more to communicate important details
- Create and save multiple custom layouts as templates—insert cover pages, add logos/images, and select font and point size
- Select the information to include for each product type—charts, histograms, readings, time stamps and more
- Compile multi-batch reports from one or more probes and instrument types
- Export readings as comma separated value (.CSV) files which can easily be imported into Excel and other supporting applications



## PosiSoft.net — Web based

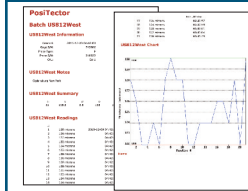
A web-based application offering secure, centralized management of readings. Access your data from any web-connected device.

- Synchronize data when connected via USB or WiFi
- Synchronize measurement data including readings, notes and pictures with PosiSoft Desktop and PosiTector App
- Securely store measurement data in the cloud and share with authorized users via a secure login



**Jobs** feature consolidates batches into groups to keep measurement data organized and to quickly create multi-batch reports (not available on PosiTector App).

## PosiSoft USB Drive — Gage based



A simple gage interface to retrieve data in a manner similar to USB flash drives, cameras, or digital audio players. No software to install or internet connection required.

- View and print readings and graphs using universal PC/Mac web browsers and file explorers
- Measurement data can be printed quickly from a formatted HTML report or exported in .CSV format for further analysis in spreadsheets
- Simple file management—Copy and paste measurement data from the PosiTector to a local folder on your computer, network folder or cloud drive
- Access stored screen captures (snapshots) of the PosiTector display



PosiTector and PosiTest AT-A instruments can integrate with third-party software, drones, ROVs, PLCs, and robotic devices using several industry-standard communication protocols.

## PosiTector Developer Resources

including Bluetooth 4.0, WiFi, USB Keyboard, and USB Serial