

TENSION INSPECT SOFTWARE



Operating Instructions

1.0	Installation	2
1.1	System Requirements	
2.0	Installing Tension Inspect	3
3.0	Using Tension Inspect	4
3.1	Basic Settings	
3.2	Starting And Stopping The Tension Value Display	
3.3	Printing Data Transfer And Data Analysis	
3.4	Logging The Tension Data On the PC	
3.5	Changing The File Name	
3.6	Recalling The Stored Tension Data	
4.0	The DOWNLOAD Button (available for ETX and ETPX only).....	8
4.1	Downloading the Tension Data from the ETX and ETPX to the PC	
4.2	Storing The Tension Data In The PC	
4.3	Recalling Stored Tension Data	
4.4	Printing Data Transfer And Data Analysis	
5.0	Warranty	11

1.0 INTRODUCTION

1.1 System Requirements

<i>Computer:</i>	PC/AT compatible computer
<i>Operating System:</i>	Windows® 95 / 98SE / ME / NT / 2000 / XP
<i>Hard Disk Space:</i>	Approx. 5 MB
<i>Installation:</i>	CD-ROM drive

5.0 WARRANTY

ELECTROMATIC Equipment Co., Inc. (ELECTROMATIC) warrants to the original purchaser that this product is of merchantable quality and confirms in kind and quality with the descriptions and specifications thereof. Product failure or malfunction arising out of any defect in workmanship or material in the product existing at the time of delivery thereof which manifests itself within one year from the sale of such product, shall be remedied by repair or replacement of such product, at ELECTROMATIC's option, except where unauthorized repair, disassembly, tampering, abuse or misapplication has taken place, as determined by ELECTROMATIC. All returns for warranty or non-warranty repairs and/or replacement must be authorized by ELECTROMATIC, in advance, with all repacking and shipping expenses to the address below to be borne by the purchaser.

THE FOREGOING WARRANTY IS IN LIEU OF ALL OTHER WARRANTIES, EXPRESSED OR IMPLIED, INCLUDING BUT NOT LIMITED TO, THE WARRANTY OF MERCHANTABILITY AND FITNESS FOR ANY PARTICULAR PURPOSE OR APPLICATION. ELECTROMATIC SHALL NOT BE RESPONSIBLE NOR LIABLE FOR ANY CONSEQUENTIAL DAMAGE, OF ANY KIND OR NATURE, RESULTING FROM THE USE OF SUPPLIED EQUIPMENT, WHETHER SUCH DAMAGE OCCURS OR IS DISCOVERED BEFORE, UPON OR AFTER REPLACEMENT OR REPAIR, AND WHETHER OR NOT SUCH DAMAGE IS CAUSED BY MANUFACTURER'S OR SUPPLIER'S NEGLIGENCE WITHIN ONE YEAR FROM INVOICE DATE.

Some State jurisdictions or States do not allow the exclusion or limitation of incidental or consequential damages, so the above limitation may not apply to you. The duration of any implied warranty, including, without limitation, fitness for any particular purpose and merchantability with respect to this product, is limited to the duration of the foregoing warranty. Some states do not allow limitations on how long an implied warranty lasts but, notwithstanding, this warranty, in the absence of such limitations, shall extend for one year from the date of invoice.

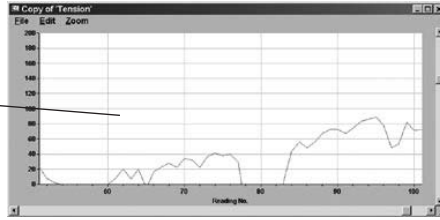
ELECTROMATIC Equipment Co., Inc.
600 Oakland Ave. Cedarhurst, NY 11516—USA
Tel: 1-800-645-4330/ Tel: 516-295-4300/ Fax: 516-295-4399

Every precaution has been taken in the preparation of this manual. Electromatic Equipment Co., Inc., assumes no responsibility for errors or omissions. Neither is any liability assumed for damages resulting from the use of information contained herein. Any brand or product names mentioned herein are used for identification purposes only, and are trademarks or registered trademarks of their respective holders.

4.4 Printing, Data Transfer and Data Analysis

Requirement

1. Click the INSPECT button. The COPY OF TENSIONS window opens and shows the current readings as a graph.

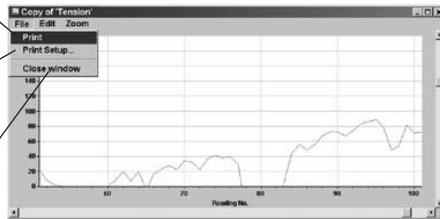


Printing

The PRINT option sends the print command to the connected printer.

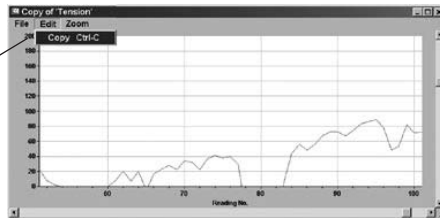
The PRINT SETUP option opens the printer setup dialog box.

The CLOSE option closes the COPY OF TENSIONS window.



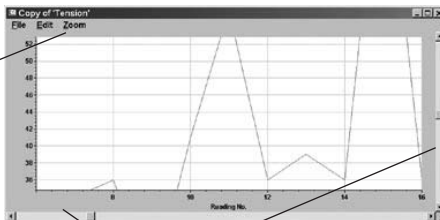
Data transfer

The COPY option copies the readings shown in the INSPECT window. The copied readings can be inserted into the MS-EXCEL® Windows application as a table or a graph by using the "PASTE SPECIAL" option.



Data analysis

The ZOOM option opens the selection menu for enlarging or reducing the graph of the readings.



With the scrollbars at the bottom and right of the screen, you can move the displayed measurement curve around horizontally and vertically.

2.0 INSTALLING TENSION INSPECT



To be able to restore the original files in case problems occur after the installation, you should **make a backup of your hard disk contents** before you start installing.

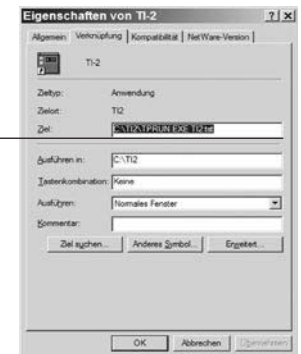
1. Insert the CD-ROM with the TENSION INSPECT program into the CD-ROM drive.
2. Open the "Start" menu and choose "Run."
3. Enter the drive character for your CD-ROM drive, followed by a colon, a backslash and the program name "SETUP"



4. Click "OK" to confirm your entry.
5. Follow the instructions on the screen.
6. At the end of the installation process, click the "RESTART NOW" button; this will restart the computer.

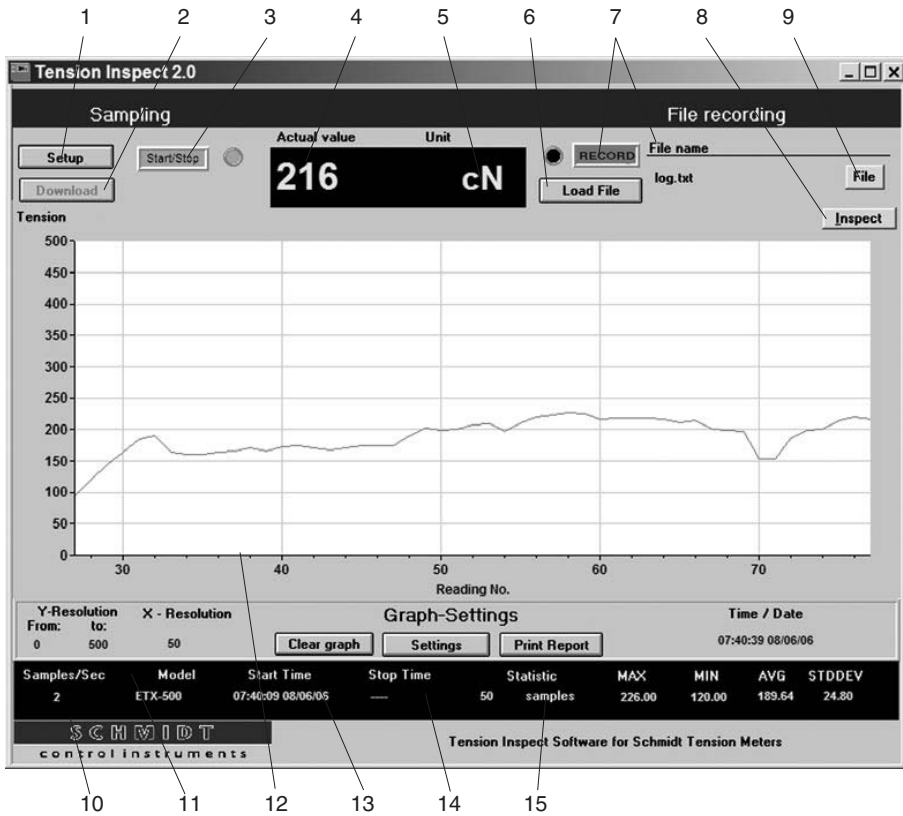
NOTE: Before you create a desktop shortcut, please make sure you have entered the complete path with all parameters in the **TARGET** box:

C:\TI2\TPRUN.EXE TI2.tst



3.0 USING TENSION INSPECT

1. Double click the Tension Inspect icon to start the program



- | | | | |
|----|---------|--------------------|-----------------------------------|
| 1 | Button | SETUP | See section 3.1 |
| 2 | Button | DOWNLOAD | See section |
| 3 | Button | START STOP | See section |
| 4 | Display | ACTUAL VALUE | Current reading |
| 5 | Display | UNIT | Unit of measure of the reading |
| 6 | Button | LOAD FILE | See section |
| 7 | Button | RECORD | See section 3.4 |
| 8 | Button | INSPECT | See section 3.3 |
| 9 | Button | FILE | See section |
| 10 | Display | STATUS LINE | Display of statistical values |
| 11 | Display | X AND Y RESOLUTION | Graph resolution for X and Y axes |
| 12 | Display | TENSION | Readings as graph |
| 13 | Button | CLEAR GRAPH | Clears the GRAPH display |
| 14 | Button | SETTINGS | See section 3.1 |
| 15 | Button | PRINT REPORT | Prints the displayed graph |

4.1 Downloading the Tension Data from the ETX (ETXP) to the PC

Requirements

Tension meter connected to the PC.
Tension meter switched on.

To download the tension data

1. Select the relevant memory number of the tension meter from the SELECTED POS.menu.
2. Click the READ MEMORY button. The tension data stored in the tension meter under the selected memory number are read into the PC.

Tension value display

TENSION display Current graph
STATUS LINE display Statistics

4.2 Storing the Tension Data in the PC

1. Click the SAVE TO FILE button. The LOGFILENAME window opens.
2. You can now enter a file name in the input box at the bottom of the window.
3. Click the SAVE button. The current readings are stored and the LOGFILENAME window closes.

4.3 Recalling the Stored Tension Data

1. Click the LOAD FILE button. The LOGFILENAME window opens.



The selected tension data file is opened and displayed as a graph.



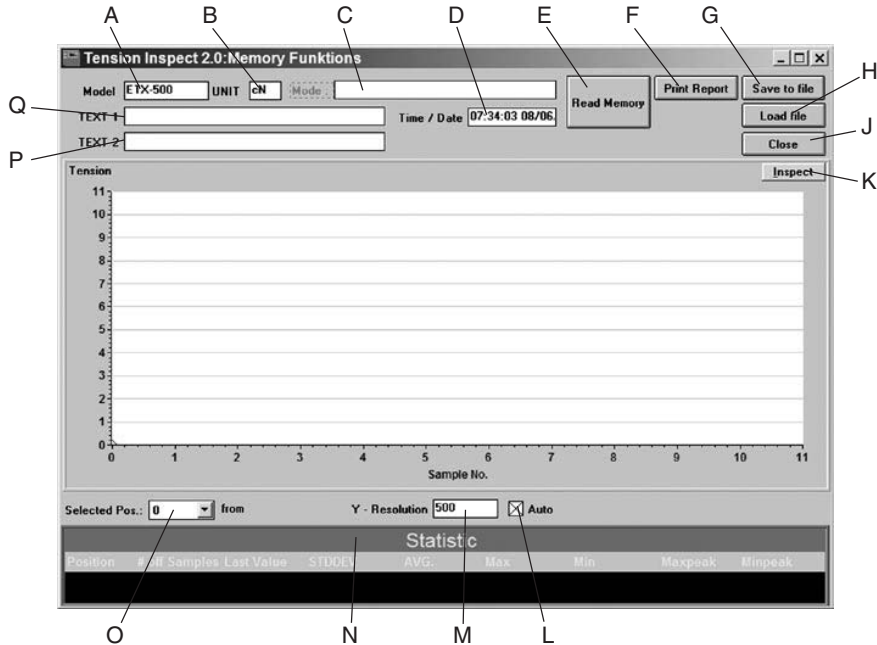
The corresponding statistics are shown in the STATUS LINE.

4.0 THE DOWNLOAD BUTTON (AVAILABLE WITH ETX AND ETPX ONLY)

With the TENSION INSPECT program you can download all the tension data stored in the memory of the connected tension meter.

To start the DOWNLOAD:

1. Click the DOWNLOAD button. The MEMORY FUNCTIONS window opens.



A	Display	MODEL	Indicates the tension meter model
B	Display	UNIT	Indicated the unit of measure
C	Display	MODE	Memory mode for data logging
D	Display	TIME/DATE	Indicate the download date
E	Button	READ MEMORY	See section 4.1
F	Button	PRINT REPORT	Prints the displayed graph
G	Button	SAVE TO FILE	See section 4.2
H	Button	LOAD FILE	See section 4.3
J	Button	CLOSE	Closes the MEMORY FUNCTIONS Window
K	Button	INSPECT	See section 4.4
L	Button	AUTO	Automatic Y resolution ON/OFF
M	Input box	Y RESOLUTION	Y resolution of the TENSION DISPLAY
N	Display	STATISTIC	Display of statistical values
O	Menu	SELECTED POS.	See section 3.8<None>
P	Input box	for entering the 1st header line describing the stored data	
Q	Input box	for entering the 2nd header line describing the stored data	

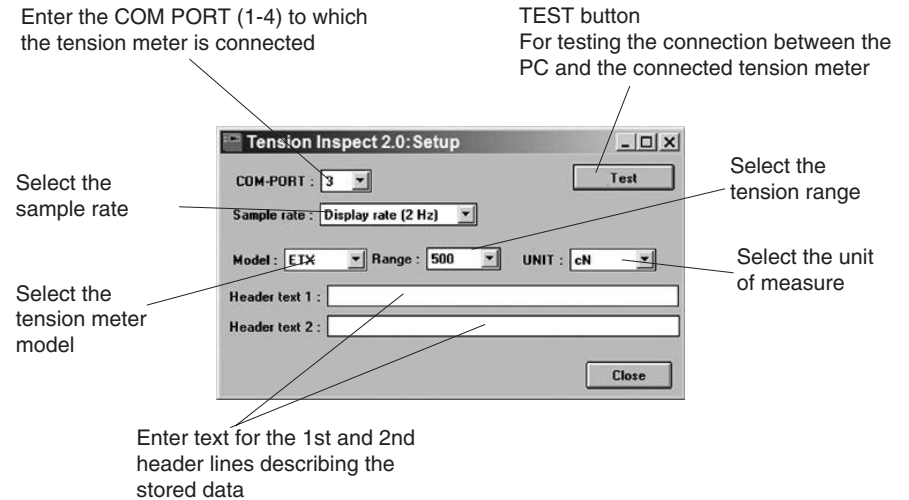
3.1 Basic Settings

NOTE: The tension meter to be used must be connected to the PC.

To edit the settings:

1. Click the **SETUP** button. The setup dialog box opens. You can now either keep the default values preset in the input boxes or customize them for your specific requirements.

The figure below shows the factory-preset defaults for a tension meter model ETX-500.



3.2 Starting and Stopping the Tension Value Display

NOTE: Before beginning, click the **CLEAR GRAPH** button to clear all readings shown in the TENSION display, if any.

Starting

1. Click the red **START STOP** button to activate the display of tension values. The button color changes to green (function enabled).

Tension value display:

TENSION display	Current graph
ACTUAL VALUE display	Current digital value
STATUS LINE display	Continuously updated statistics

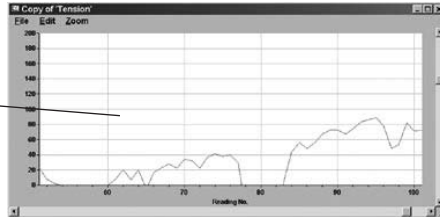
Stopping

1. Click the now green **START STOP** button. The display of the tension values stops. The button color changes back to red (function disabled).

3.3 Printing, Data Transfer and Data Analysis

Requirement

1. Click the INSPECT button. The COPY OF TENSIONS window opens and shows the current readings as a graph.

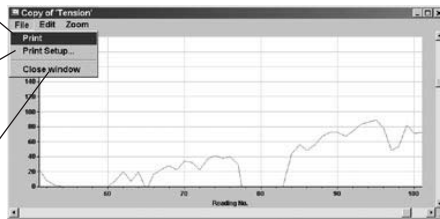


Printing

The PRINT option sends the print command to the connected printer.

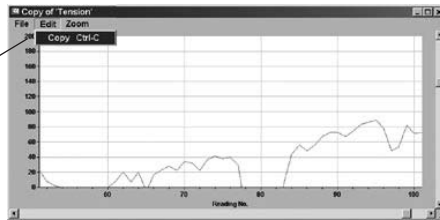
The PRINT SETUP option opens the printer setup dialog box.

The CLOSE option closes the COPY OF TENSIONS window.



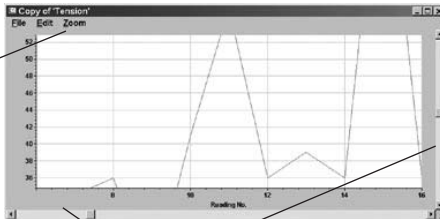
Data transfer

The COPY option copies the readings shown in the INSPECT window. The copied readings can be inserted into the MS-EXCEL® Windows application as a table or a graph by using the “PASTE SPECIAL” option.



Data analysis

The ZOOM option opens the selection menu for enlarging or reducing the graph of the readings.



With the scrollbars at the bottom and right of the screen, you can move the displayed measurement curve around horizontally and vertically.

3.4 Logging the Tension Data on the PC

1. Click the red RECORD button to start continuous data logging. The button color changes to green (function enabled) and the label changes from RECORD to STOP. The LOGFILENAME window opens and you are prompted for a file name.
2. Start the measuring cycle as described in section 3.2. The program now continuously logs all the received readings. You can save any number of readings in this file while the file is open.

NOTE: After you have closed a file containing stored readings, you cannot add any new readings to this file when you reopen it. You have to create a new file with a different file name.

3.5 Changing the File Name

1. Click the FILE button. The LOGFILENAME window opens.
2. You can now change the name of a file in the input box at the bottom of the window.
3. Click the SAVE button. The entered file name is saved and the LOGFILENAME window closes.

3.6 Recalling the Stored Tension Data

1. Click the LOAD FILE button.

The LOGFILENAME window opens.



The selected tension data file is opened and displayed as a graph.

The corresponding statistics are shown in the STATUS LINE.

