


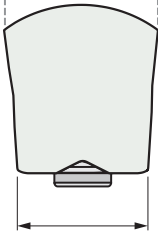
| Order Code | Description |
|------------|---------------------------------------|
| F1 | PosiTector Standard with 6000 F Probe |
| F3 | PosiTector Advanced with 6000 F Probe |

PosiTector 6000

Coating Thickness Gage

Compare PosiTector Gage Bodies

| Features | Standard | Advanced |
|---|-----------------|--------------------------------|
| NEW Larger 2.8" impact resistant color touchscreen with redesigned keypad for quick menu navigation | ● | ● |
| Fast Mode—90+ readings per minute for quick inspection | ● | ● |
| Statistics Mode—Instantly calculate average, standard deviation, min/max thickness and number of readings while measuring | ● | ● |
| Two year warranty on body AND probe | ● | ● |
| Reading Storage Capacity | 1,000 per probe | 250,000 in up to 1,000 batches |
| Live graphing of measurement data | | ● |
| NEW Touchscreen keyboard for quickly renaming batches, adding notes, and more | | ● |
| NEW SSPC-PA 2, ISO 19840, and IMO PSPC 90/10 modes help users comply with standards by prompting for max/min specifications, displaying the necessary readings, and automatically calculating statistics with a pass/fail result. | | ● |
| NEW Prompted Batch Mode—create pre-defined batches with on-screen text and image prompts for each reading | | ● |
| 3 Scan Modes—Increase measurement speed to 180+ readings per minute | | ● |
| Multiple stored calibration adjustments for measuring on a variety of substrate conditions | | ● |
| Connection Options | | |
| USB port for fast, simple connection to a PC and to supply continuous power. USB cable included. | ● | ● |
| WiFi technology wirelessly synchronizes with PosiSoft.net and downloads software updates | | ● |
|  Bluetooth 4.0 Technology for data transfer to a mobile device running the PosiTector App or optional portable printer. BLE API available for integration into third-party software. | | ● |

| Removeable Integral Probe | Probe Model F | |
|---|---------------|--|
|  <p>21mm / 0.8"</p> <p>Side View</p> | Range: | 0 - 60 mils |
| | | 0 - 1500 μ m |
| | *Accuracy: | $\pm (0.05 \text{ mils} + 1\%)$ 0 - 2 mils $\pm (0.1 \text{ mils} + 1\%)$ > 2 mils |
| | | $\pm (1 \mu\text{m} + 1\%)$ 0 - 50 μ m $\pm (2 \mu\text{m} + 1\%)$ > 50 μ m |
| *Accuracies are stated as a fixed value plus a percentage of the gage's actual reading. | | |

F probe for measuring non-magnetic coatings on steel substrates.
Ideal for one-handed operation.



| Order Code | Description |
|------------|---------------------------------------|
| F1 | PosiTector Standard with 6000 F Probe |
| F3 | PosiTector Advanced with 6000 F Probe |

All Gages Feature...



Simple

- Fast measurement speed—60+ readings per minute. Enhanced FAST mode—90+ readings per minute for quick inspection.
- Ready to measure—no adjustment required for most applications
- **NEW** Larger 2.8" impact resistant color touchscreen with redesigned keypad for quick menu navigation
- **NEW** On-gage help explains menu items at the touch of a button
- Flashing display—ideal in a noisy environment
- RESET feature instantly restores factory settings



Durable

- **NEW** Weatherproof, dustproof, and water-resistant—IP65-rated enclosure
- **NEW** Ergonomic design with durable rubberized grip
- Wear-resistant probe tip
- Shock-absorbing protective rubber holster for added impact resistance
- Two year warranty on gage body AND probe



Accurate

- Certificate of Calibration showing traceability to NIST or PTB included
- Built-in temperature compensation ensures measurement accuracy
- Hi-RES mode increases displayed resolution for precision applications
- Conforms to national and international standards including ISO and ASTM



Versatile

- Multiple calibration adjustment options including zero, 1 point, 2 point, and ISO 19840 correction factors
- Selectable display languages
- **NEW** Auto rotating display with Flip Lock



Powerful

- Continually displays/updates average, standard deviation, min/max, and number of readings while measuring
- **NEW** Screen Capture—save 100 screen images for record keeping and review
- HiLo alarm audibly and visibly alerts when measurements exceed user-specified limits
- **NEW** Instant-on feature quickly powers up the gage if recently powered down
- **NEW** Up to 30% longer battery life
- USB port for fast, simple connection to a PC and to supply continuous power. USB cable included.
- PosiSoft USB Drive—stored readings and graphs can be accessed using universal PC/Mac web browsers or file explorers. No software required.
- Every stored measurement is date and time stamped
- Includes PosiSoft suite of software for viewing and reporting data (see page 3)

Award Winning Compatibility!

PosiTector body accepts all PosiTector 6000, 200, DPM, IRT, RTR, SPG, SST, SHD, BHI, and UTG probes easily converting from a coating thickness gage to a dew point meter, surface profile gage, soluble salt tester, hardness tester, or ultrasonic wall thickness gage.



Comes complete with PosiTector gage body, F probe, precision plastic shim(s), protective rubber holster, wrist strap, 3 AAA alkaline batteries, instructions, protective lens shield, convenient carrying case, Long Form Certificate of Calibration traceable to NIST or PTB, USB cable, PosiSoft Software, two (2) year warranty.

***SIZE:** 127 x 66 x 25.4 mm (5" x 2.6" x 1")

***WEIGHT:** 137 g (4.9 oz.) without batteries

CONFORMS TO: ISO 19840/2178/2360/2808, ASTM B244/B499/D1186/D1400/D7091/E376/G12, BS3900-C5, SSPC-PA2 and others

*Size and weight are for the PosiTector gage body only and do not include the probe.

PosiSoft® Suite of Software

Four FREE and unique ways to view and report your PosiTector and PosiTest data

PosiSoft Desktop — PC/Mac

Powerful desktop software for downloading, viewing, printing and archiving measurement data. No internet connection required.

- Import readings directly from the gage via USB or from legacy PosiSoft desktop versions
- Synchronize measurement data including readings, notes and pictures to and from PosiSoft.net
- Import/Export Templates and Jobs to share with other users
- Import PDF forms and overlay **Custom Fields** for automatic population of inspection and measurement data
- Report preview automatically refreshes as changes are made



Prompted Batch Mode

Create pre-defined batches with onscreen text and image prompts for each reading and upload to PosiTector 6000 gages (*Advanced models only*).

- Ideal for ensuring a consistent measurement pattern for repetitive jobs or when specific measurement locations are required
- Create and store multiple templates for different jobs

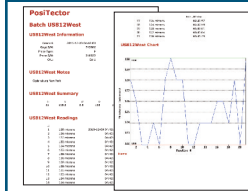
PosiSoft.net — Web based

A web-based application offering secure, centralized management of readings. Access your data from any web-connected device.

- Synchronize data when connected via USB or WiFi
- Synchronize measurement data including readings, notes and pictures with PosiSoft Desktop and PosiTector App
- Securely store measurement data in the cloud and share with authorized users via a secure login



PosiSoft USB Drive — Gage based



A simple gage interface to retrieve data in a manner similar to USB flash drives, cameras, or digital audio players. No software to install or internet connection required.

- View and print readings and graphs using universal PC/Mac web browsers and file explorers
- Measurement data can be printed quickly from a formatted HTML report or exported in .CSV format for further analysis in spreadsheets
- Simple file management—Copy and paste measurement data from the PosiTector to a local folder on your computer, network folder or cloud drive
- Access stored screen captures (snapshots) of the PosiTector display



PosiTector and PosiTest AT-A instruments can integrate with third-party software, drones, ROVs, PLCs, and robotic devices using several industry-standard communication protocols.

PosiTector App — Mobile

Mobile app connects PosiTector Advanced instruments, the PosiTector SmartLink and the PosiTest AT-A to your *iOS* or *Android* smart device.

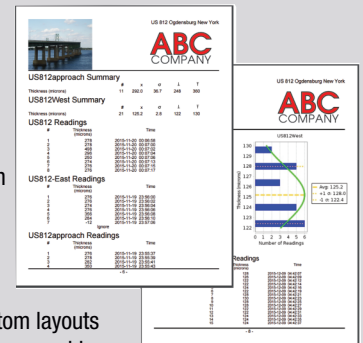
- Auto pairing Bluetooth BLE connection
- Automatically generate user-formatted reports and share via email, text, cloud storage services like Dropbox, and more
- Export readings to PosiSoft Desktop or synchronize readings to and from PosiSoft.net for further reporting and archival options



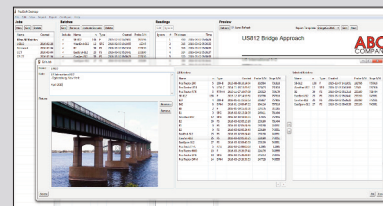
PosiSoft Custom PDF Report Generator

Easily create reports from your measurement data in seconds.

featured on
PosiSoft Desktop
PosiSoft.net
PosiTector App



- Include inspection information such as on-site pictures, screen captures, notes, and more to communicate important details
- Create and save multiple custom layouts as templates—insert cover pages, add logos/images, and select font and point size
- Select the information to include for each product type—charts, histograms, readings, time stamps and more
- Compile multi-batch reports from one or more probes and instrument types
- Export readings as comma separated value (.CSV) files which can easily be imported into Excel and other supporting applications



Jobs feature consolidates batches into groups to keep measurement data organized and to quickly create multi-batch reports (not available on PosiTector App).

PosiTector Developer Resources
including Bluetooth 4.0, WiFi,
USB Keyboard, and USB Serial